

millboard

Live. Life. **Outside.**



Modello Contour Installation and user guide

EN-UK

Contents

Introduction	3
Stringline Installation Method	4
The top 24 designer patterns	9
Pattern 11.1	10
Pattern 11.11	11
Pattern 11.12	12
Pattern 11.13	14
Pattern 11.14	15
Pattern 11.15	16
Pattern 11.17	17
Pattern 11.2	18
Pattern 11.21	19
Pattern 11.22	20
Pattern 11.23	21
Pattern 11.26	22
Pattern 11.3	23
Pattern 11.32	24
Pattern 11.37	25
Pattern 11.4	26
Pattern 11.43	27
Pattern 11.45	28
Pattern 11.47	29
Pattern 11.5	30
Pattern 11.53	31
Pattern 11.6	32
Pattern 11.7	32
Pattern 11.72	33
Taking care	34

Modello Installation Guide

Modello by Millboard is a groundbreaking innovation that has reimagined what decking can be. Blending beauty with versatility, Modello offers a transformative solution for outdoor spaces. The range comes in two board types - Linear and Contour. Both board types have the same dimensions and work on the same geometric layout, Linear has straight design lines whereas Contour has curved lines. The boards have a design pattern that works out at 200mm, with the design mirrored every 600mm so will work at 400mm and 300mm centres, depending on the overall pattern selected. The boards are 196mm wide, however the spacing works to 200mm with a 4mm gap between boards.

The Modello Deck boards are marked along each side with either an **X** or a **0** every 400mm. This is to facilitate correct installation and ensures that depending on the pattern requirements the boards are facing the right direction when being installed.



Installation Principals: Modello installation requires careful planning, setting out and precision workmanship for the best results. Inexperience in fitting Millboard decking or a lack of attention to detail may result in a poor-quality finish. It is important to consider who will be installing the Modello, based on the level of their experience.

Note:

The ends of all the Modello deck boards have a 2mm blank section which will need trimming off before the deck boards are finally installed. Set the chop saw to a 3-degree bevel angle when cutting the ends off. This will help when fitting the ends of the deck boards together and if minor adjustments are required, they can be done with a hand saw or multi-tool.

Deck boards not all finishing on one joist

Staggering the joints on a deck is important for a number of reasons, including:

Structural integrity

Staggering the joints prevents the boards from aligning across multiple joists, which could create a weak point in the deck.

Aesthetic appeal

Staggered joints create a more natural and random appearance and helps to make them less obvious.

Material efficiency

Staggering can help in utilizing off-cuts and reduce wastage.

Distributes weight and stress

Staggering the joints helps to distribute the weight and stress on the deck more evenly, which can help to prevent warping and other forms of damage over time.

It is **strongly advised that the deck subframe is constructed with the DuoSpan aluminium subframe system**, as it creates a more accurate straighter platform that is essential when installing the Modello decking.

For installation information on the DuoSpan aluminium subframe system please refer to www.millboard.com/en-gb/installation-guides.

Stringline Installation Method

IMPORTANT: Please read all stages 1-10 before starting to install the first board.

The following installation method may seem a little different to normal, but it's a good, simple and very effective quick method of laying deck boards accurately. For information on building subframes correctly please refer to www.millboard.com

Ensure the joists are at exactly 90° to the Modello deck boards, and the joist spacing is exactly 400mm or 300mm centres dependant on the design. If the first board is not starting half-way through the first joist, please take this into consideration with the first joist spacing as it may need to be less for the pattern to align.

Prior to installing the deck, loose lay the boards to ensure the overall pattern is correct whatever is desired. It is important to consider where all the boards will finish once they are all laid, due to a small amount of product being removed when the boards are cut, they may not always finish inline with the starting board. It is helpful to look at the patterns on the ends of the board to check the correct orientation, as well as the X's and O's on the side of the boards.

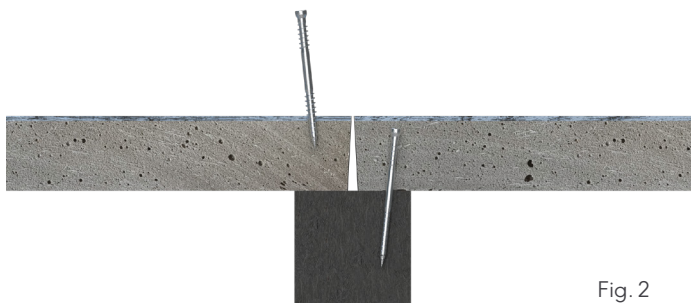
It is best to insert the Durafix screws through the rough/dark texture on the boards, to achieve the best overall result.

1. Lay the first Modello deck board run to a stringline to ensure this board is straight, so that the boards spaced off this are as straight as possible. The string line should be set to the top edge of the deck board. (Fig:1a)



2. Cut the blanks off the ends off the board with a slight back-cut of around 2-3 degrees.

This back-cut makes it easier to adjust butt joints if required, carefully running a handsaw or multi-tool along the gap helps to even the gap and make the deck more visually attractive. As shown in Fig.2 leave a 1mm gap between butt joints, packers may be required to create a level finish between boards.



3. On a butt joint, the pattern is mirrored across the joint to keep the pattern correct. The markings on the side of the board will also be mirrored across the joint.

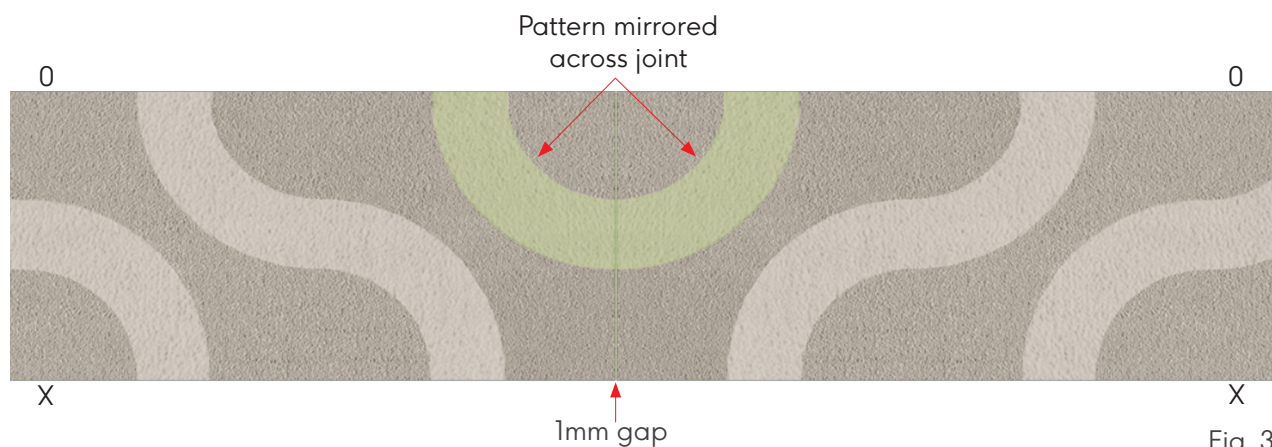


Fig. 3

4. Each pattern through this guide dictates whether setting the 4th board or 6th board run after the 1st board run works best. For example, measure 800mm (depth of 4 rows of deck boards including the 4mm gaps required) from the back of the first row of decking or the border board and set up the string line again. As shown in Fig.4



Fig. 4

5. To ensure the pattern stays inline, set up another stringline exactly 90° to the boards (this is done simply using the 3-4-5 triangle principle). This should be set-out at a point on the pattern that lines through the other points on the pattern. An example is shown below on (Fig.5).

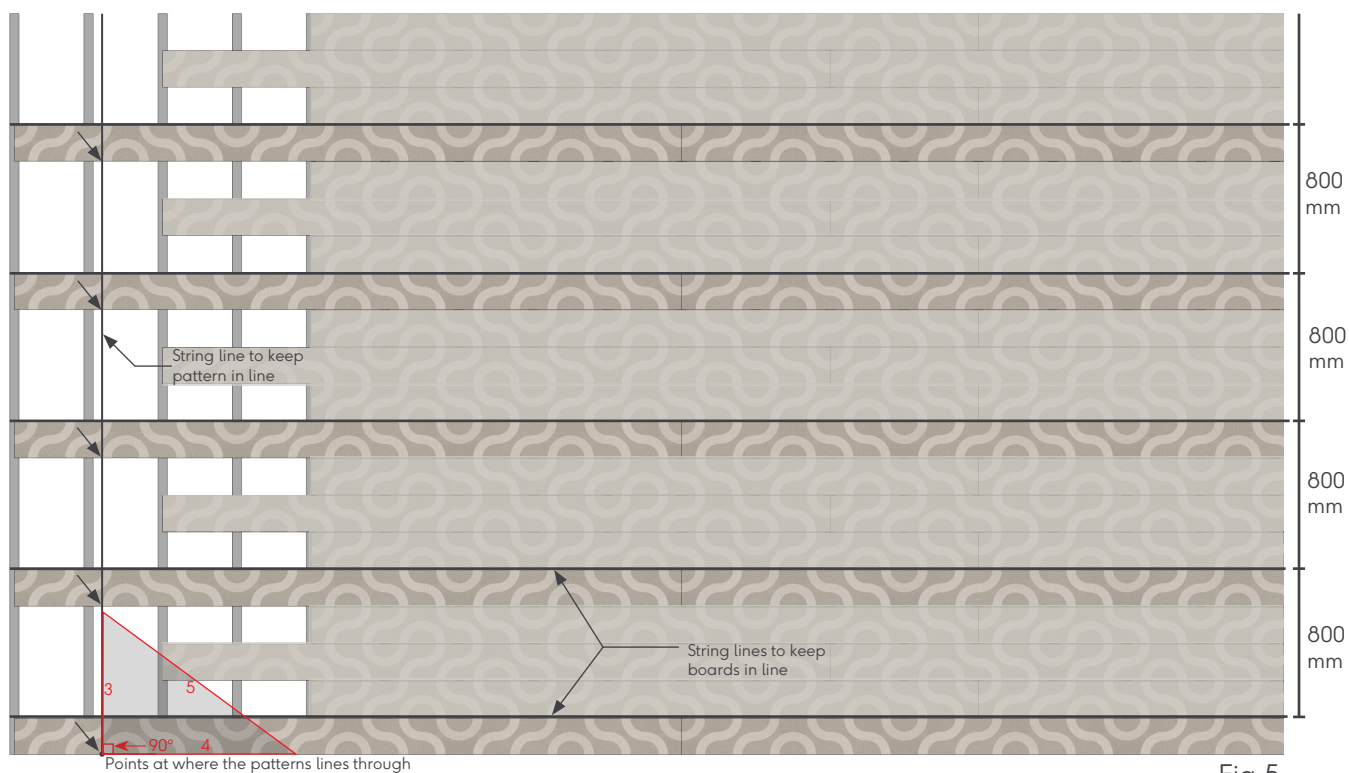


Fig.5

6. Now measure 1600mm (2x 800mm or 8 rows of boards) from the first row and fit a 2nd row of decking to the string line. Continue to install guide rows of decking boards for as long required across the deck or area to be covered in Modello. To keep the boards parallel and square, it is best to measure the guide rows from the 1st row where possible (Fig.6)

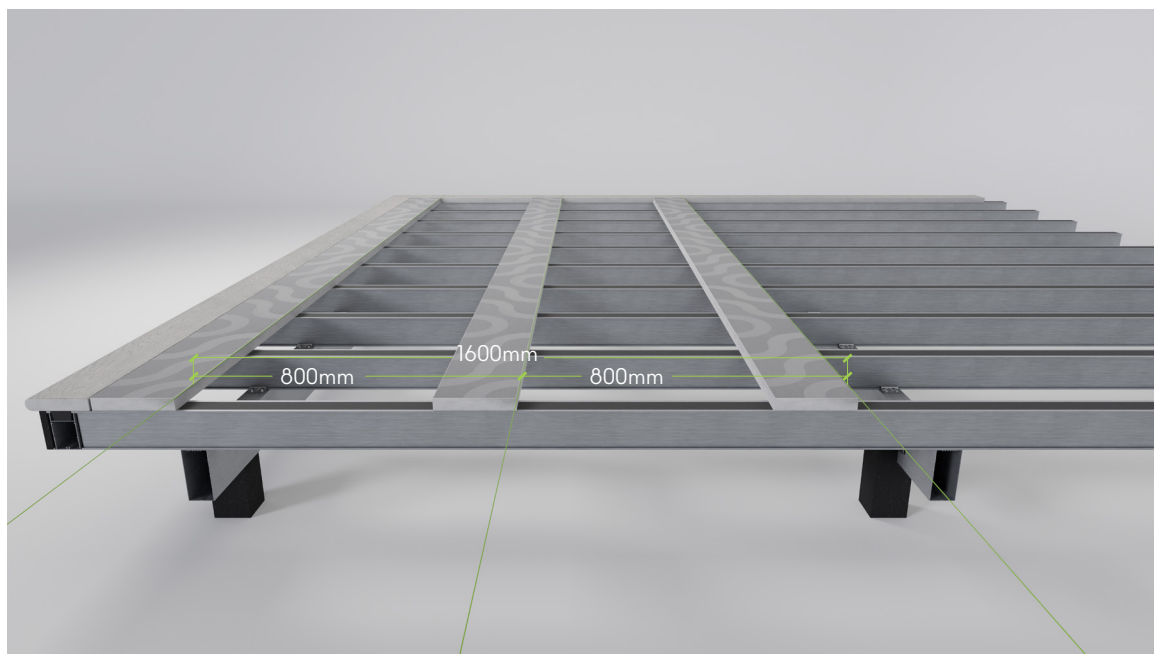


Fig. 6

7. Now that every 4th row (or depending on the pattern required) of decking has been installed parallel and with the ends of the boards set at the correct position, spaced correctly, it's time to infill the rest of the deck boards. (Fig.7)

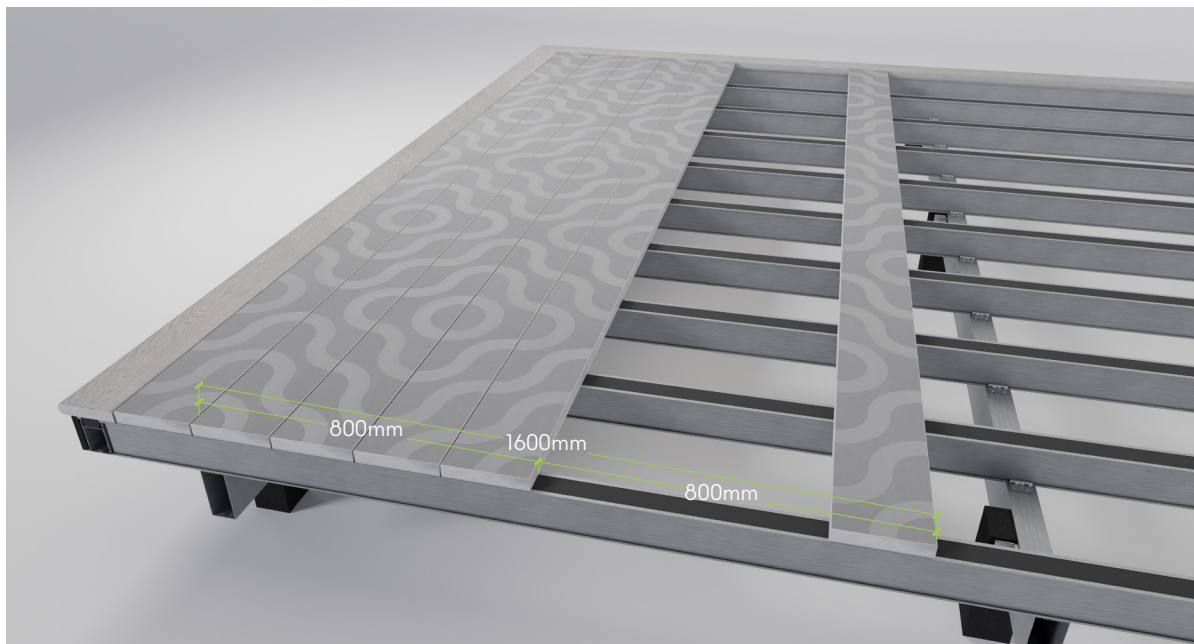


Fig. 7

8. When infilling the rest of the boards, remember to trim the ends of the deck boards back (as per point 2) before installing and use the Millboard Multi-Spacer to space all of the infilling boards 1mm butt joint and 4mm side spacings are standard but may need to be adjusted for board variations. Ensure the pattern lines through before installing the boards, adjustments may need to be made to the board joins to help with pattern alignment.

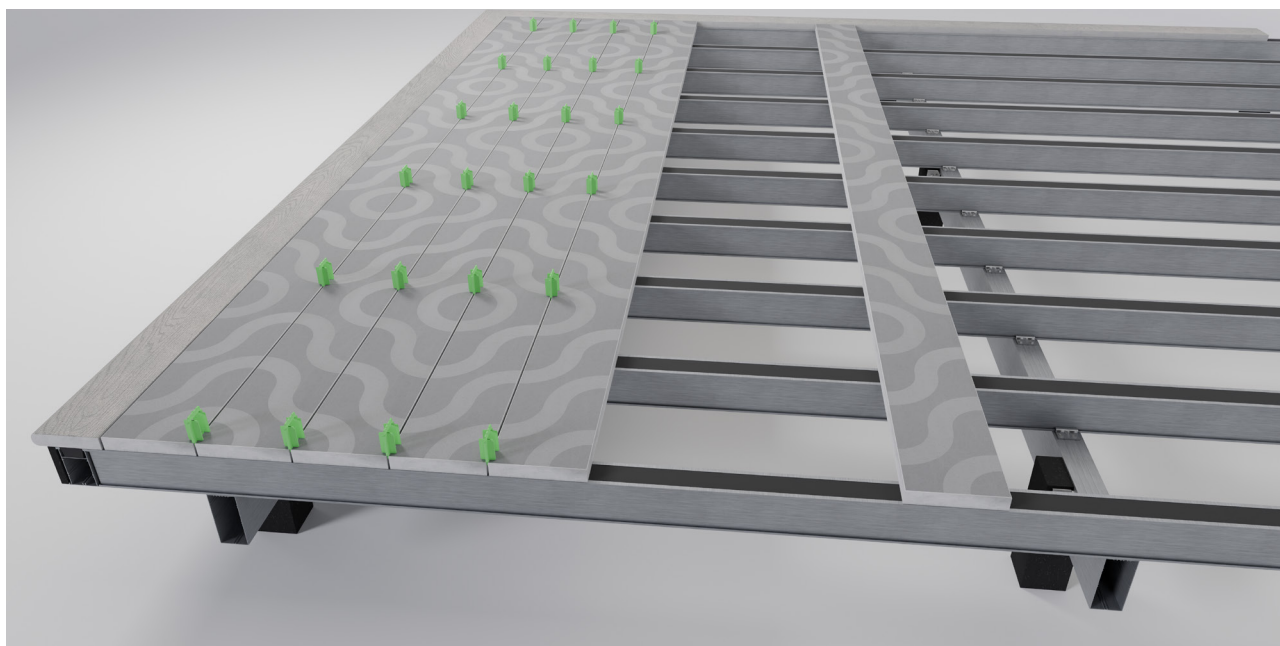


Fig.8

9. On most designs, the off-cut from the end of the run can be used to infill at the start of the run as shown in Fig 9. As this off-cut is taken from the middle of a board, a saw blades width has been taken from the pattern of the board. Therefore, a line will need to be cut at the start to make the starting edge straight.

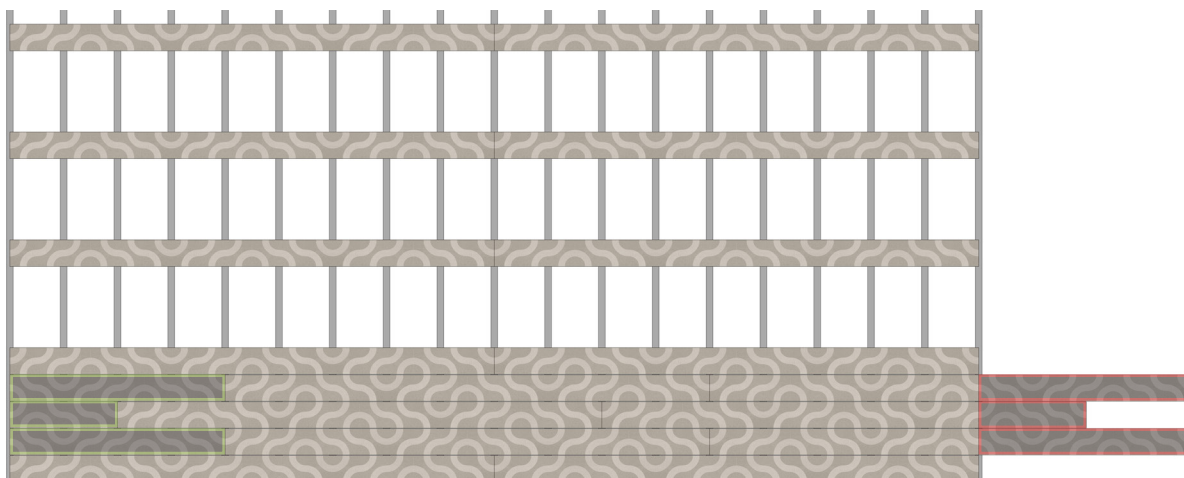


Fig.9

10. When using off-cuts in the design, ensure these off-cuts start at the right position. Before cutting the off-cut to length, make sure the first cut is halfway in between the pattern semi-circle, then measure to length. This should be cut with a back-cut as per point 2, cut on the **waste** side of the line.



Fig.10

Note:

On larger areas, it is best to ensure the pattern lines up in the middle of the area's run before installing the infilling boards running out to the edges.

Due to manufacturing tolerances on the boards, small areas of pattern discrepancies can be expected.



Millboard | Contour patterns

Patterns created with the Contour board

Pattern 11.1

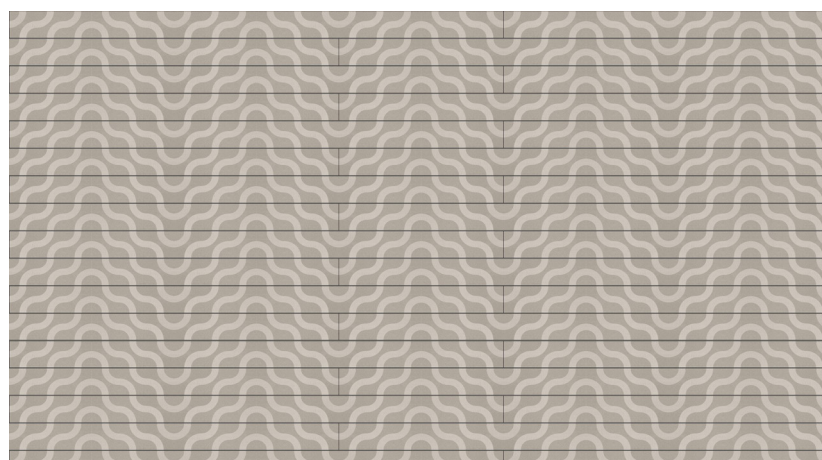
Use: Commercial or residential

Joist centres: 300mm or 400mm

Deck board side spacing: 4mm. Butt Joint spacing: 1mm

(Note: this joint may open slightly with temperature fluctuations)

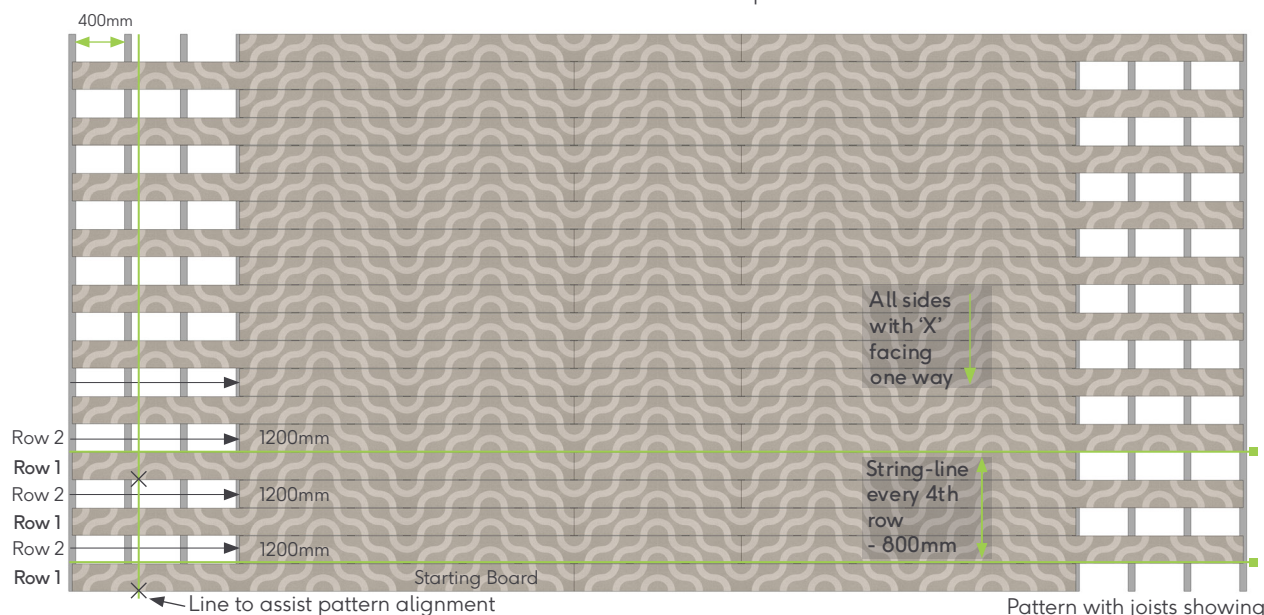
Pattern 11.1 is created by laying the deck boards with all the board sides marked with 'X' facing the same direction. Every 2nd row is moved, as per the images below.



Overall pattern

Note:

To minimize deviations in pattern designs from off-cuts, use a thin kerf saw blade. To ensure a clean edge, trim the deck edge after install - take this into consideration before install.



Arrows (→) show where to start the board on the row for this pattern

Crosses (X) show where the pattern lines through on the boards

Pattern repeats from the starting board again on **Row 1**

Note: All sections of boards should be supported by at least three joists, if the board section is only going to be supported by two joists, move the board by 1200mm to retain the same pattern. The same applies if two rows of boards will be joining on the same joist. This is the reason none of the designs show boards moving by only 400mm, on these designs we have already shown the additional 1200mm movement.

Pattern 11.11

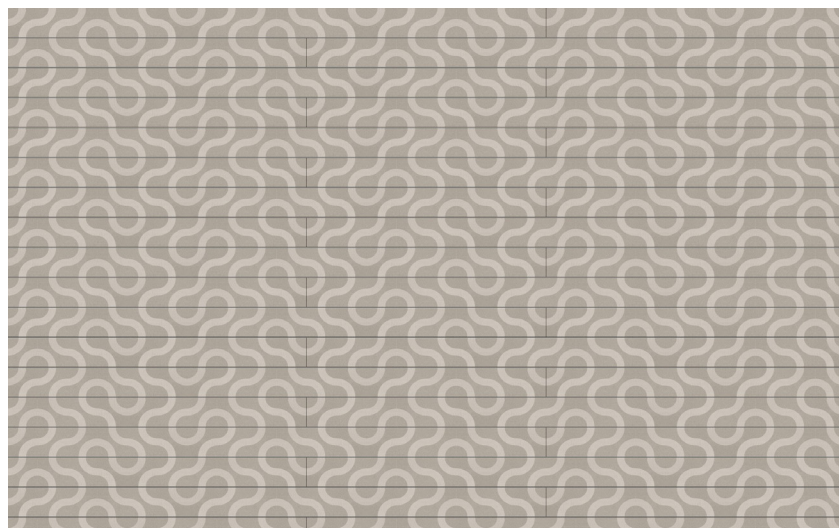
Use: Residential

Joist centres: 400mm

Deck board side spacing: 4mm. Butt Joint spacing: 1mm

(Note: this joint may open slightly with temperature fluctuations).

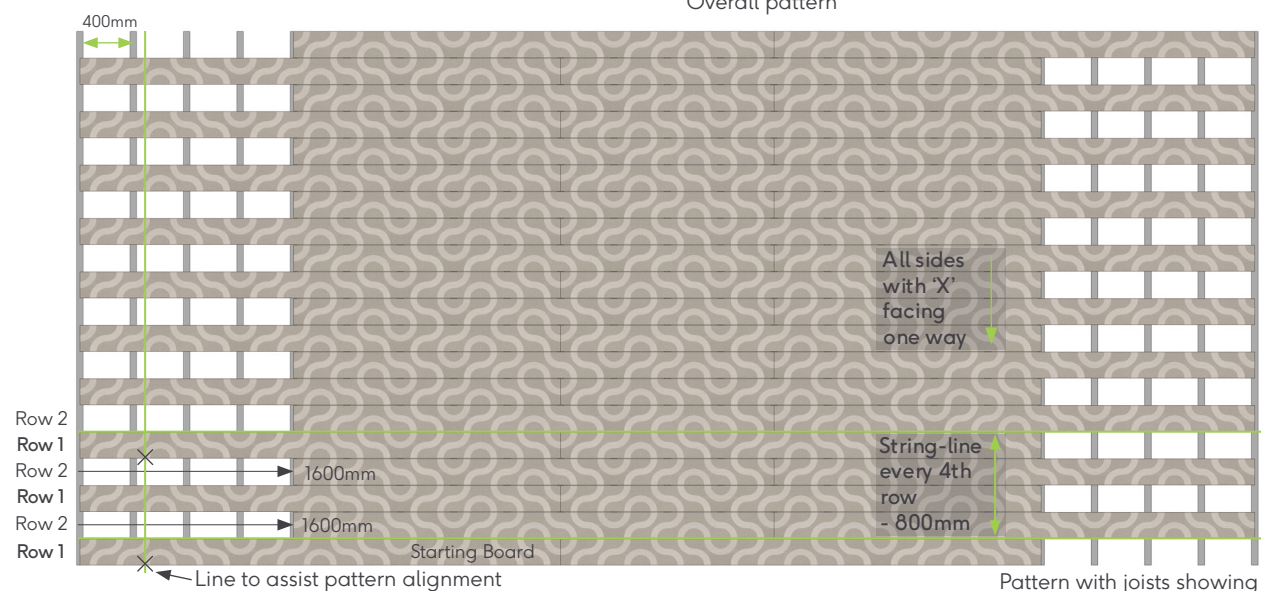
Pattern 11.11 is created by laying the deck boards with all the board sides marked with 'X' facing the same direction. Every 2nd row is moved, as per the images below.



Overall pattern

Note:

To minimize deviations in pattern designs from off-cuts, use a thin kerf saw blade. To ensure a clean edge, trim the deck edge after install - take this into consideration before install.



Arrows (→) show where to start the board on the row for this pattern

Crosses (X) show where the pattern lines through on the boards

Pattern repeats from the starting board again on **Row 1**

Note: All sections of boards should be supported by at least three joists, if the board section is only going to be supported by two joists, move the board by 1200mm to retain the same pattern. The same applies if two rows of boards will be joining on the same joist. This is the reason none of the designs show boards moving by only 400mm, on these designs we have already shown the additional 1200mm movement.

Pattern 11.12

Use: residential

Joist centres: 400mm

Deck board side spacing: 4mm. Butt Joint spacing: 1mm

(Note: this joint may open slightly with temperature fluctuations)

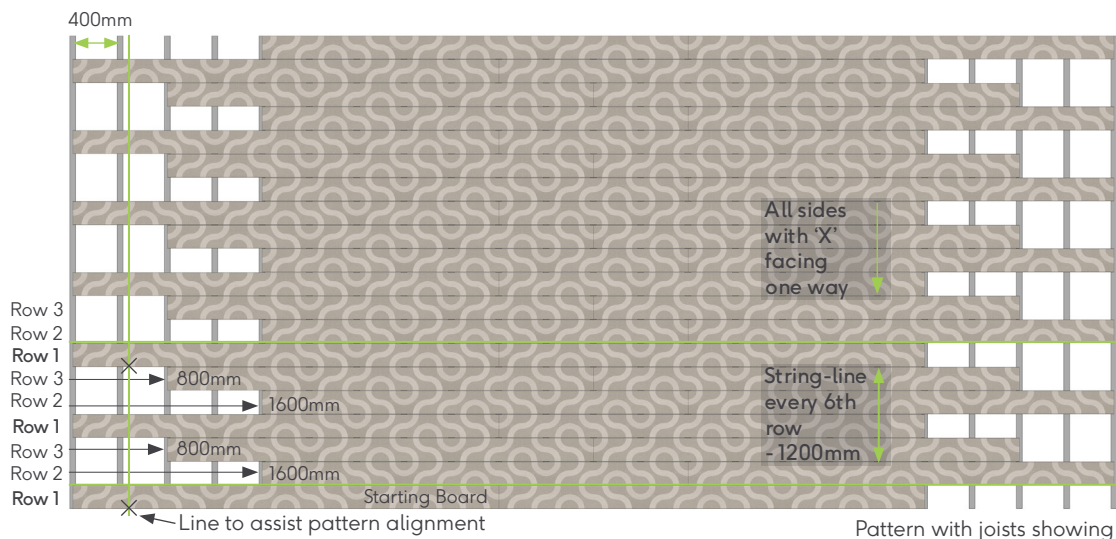
Pattern 11.12 is created by laying the deck boards with all the sides marked 'X' facing the same direction. Every 2nd-3rd row is moved, as per the images below.



Overall pattern

Note:

To minimize deviations in pattern designs from off-cuts, use a thin kerf saw blade. To ensure a clean edge, trim the deck edge after install - take this into consideration before install.



Pattern with joists showing

Arrows (→) show where to start the board on the row for this pattern

Crosses (X) show where the pattern lines through on the boards

Pattern repeats from the starting board again on Row 1

Note: All sections of boards should be supported by at least three joists, if the board section is only going to be supported by two joists, move the board by 1200mm to retain the same pattern. The same applies if two rows of boards will be joining on the same joist. This is the reason none of the designs show boards moving by only 400mm, on these designs we have already shown the additional 1200mm movement.

Pattern 11.13

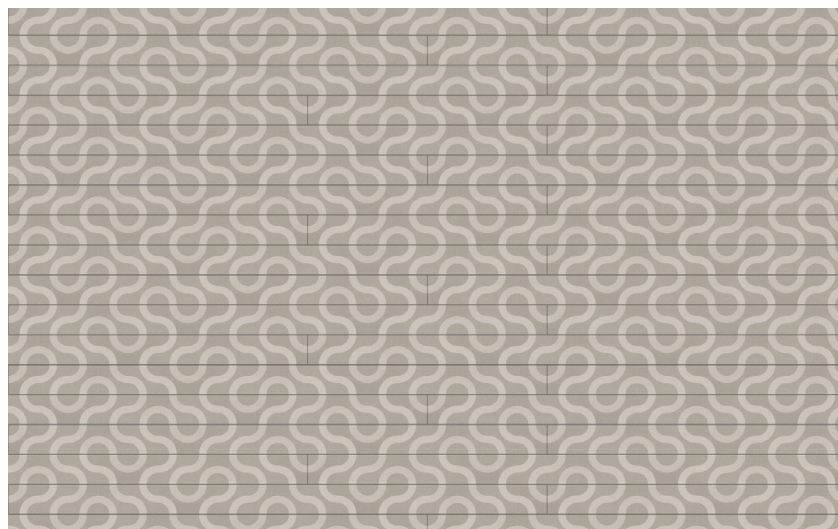
Use: Residential

Joist centres: 400mm

Deck board side spacing: 4mm. Butt Joint spacing: 1mm

(Note: this joint may open slightly with temperature fluctuations)

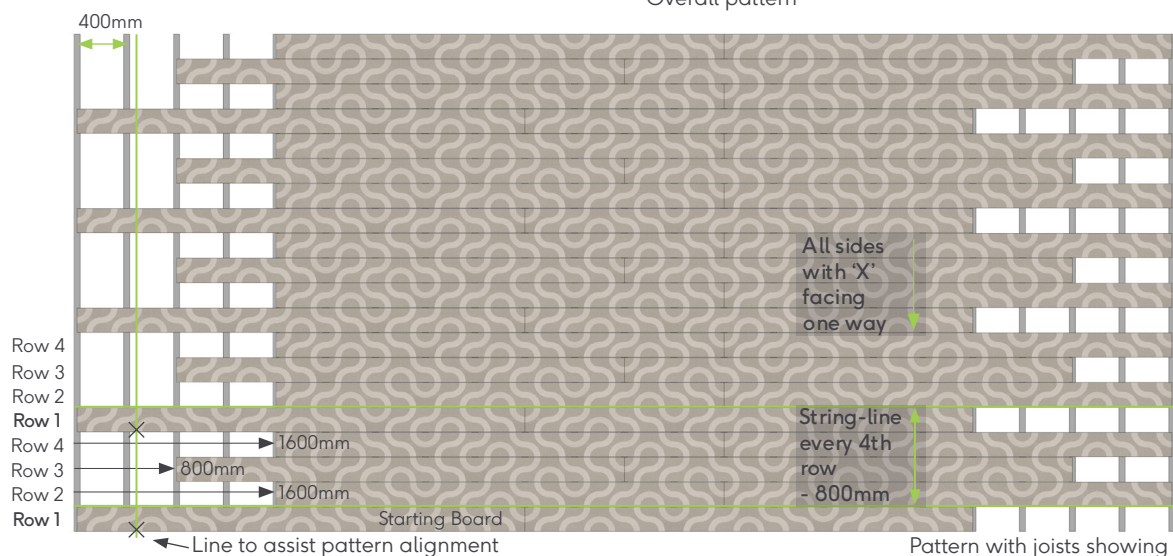
Pattern 11.13 is created by laying the deck boards with all the board sides marked with 'X' facing the same direction. Every 2nd-4th row is moved, as per the images below.



Overall pattern

Note:

To minimize deviations in pattern designs from off-cuts, use a thin kerf saw blade. To ensure a clean edge, trim the deck edge after install - take this into consideration before install.



Arrows (→) show where to start the board on the row for this pattern

Crosses (X) show where the pattern lines through on the boards

Pattern repeats from the starting board again on **Row 1**

Note: All sections of boards should be supported by at least three joists, if the board section is only going to be supported by two joists, move the board by 1200mm to retain the same pattern. The same applies if two rows of boards will be joining on the same joist. This is the reason none of the designs show boards moving by only 400mm, on these designs we have already shown the additional 1200mm movement.

Pattern 11.14

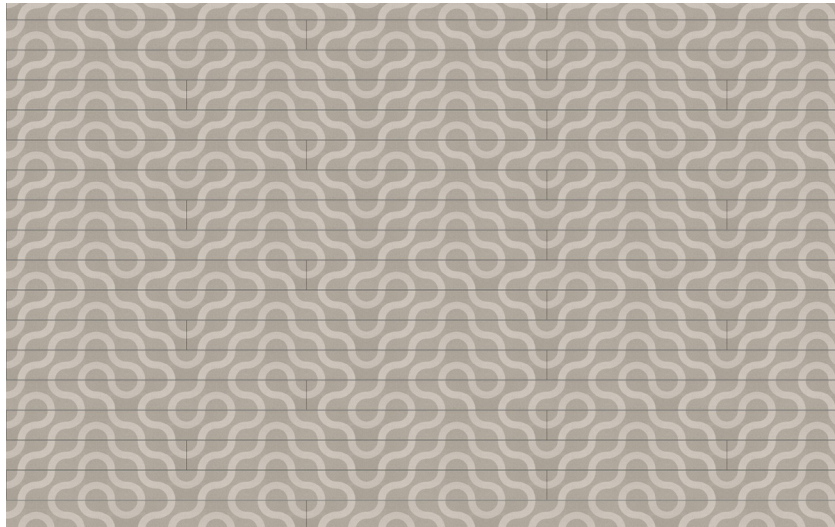
Use: Residential

Joist centres: 400mm

Deck board side spacing: 4mm. Butt Joint spacing: 1mm

(Note: this joint may open slightly with temperature fluctuations)

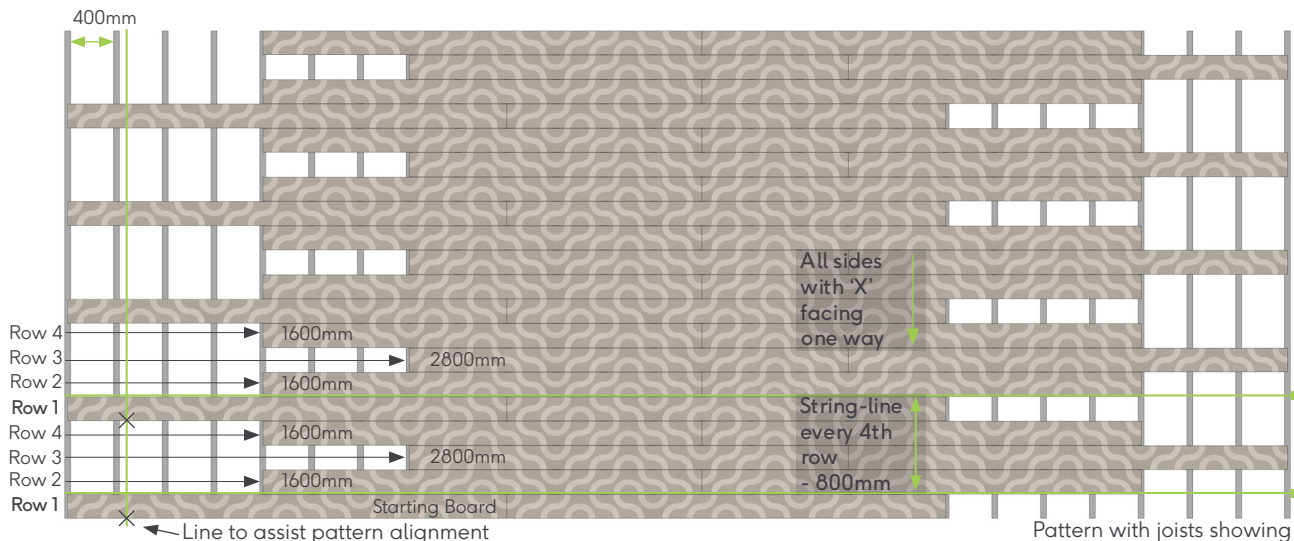
Pattern 11.14 is created by laying the deck boards with all the board sides marked 'X' facing the same direction. Every 2nd-4th row is moved, as per the image below.



Overall pattern

Note:

To minimize deviations in pattern designs from off-cuts, use a thin kerf saw blade. To ensure a clean edge, trim the deck edge after install - take this into consideration before install.



Arrows (→) show where to start the board on the row for this pattern

Crosses (X) show where the pattern lines through on the boards

Pattern repeats from the starting board again on Row 1

Note: All sections of boards should be supported by at least three joists, if the board section is only going to be supported by two joists, move the board by 1200mm to retain the same pattern. The same applies if two rows of boards will be joining on the same joist. This is the reason none of the designs show boards moving by only 400mm, on these designs we have already shown the additional 1200mm movement.

Pattern 11.15

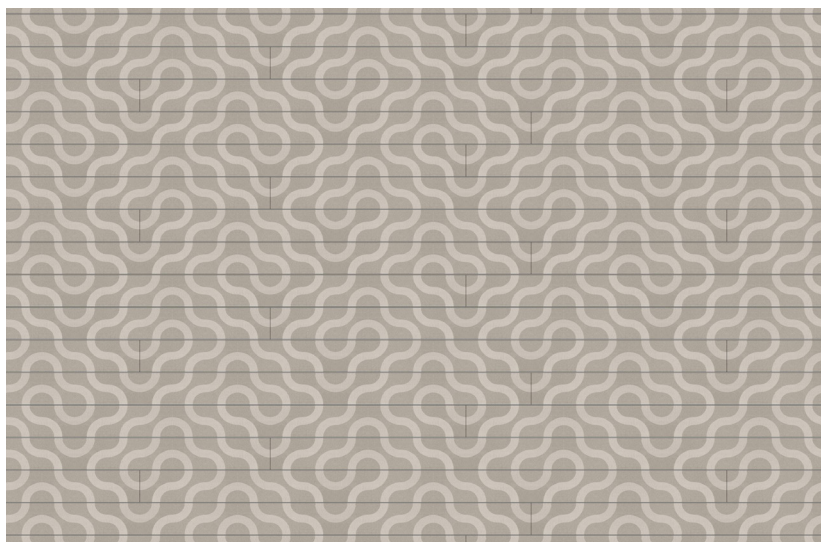
Use: Residential

Joist centres: 400mm

Deck board side spacing: 4mm. Butt Joint spacing: 1mm

(Note: this joint may open slightly with temperature fluctuations)

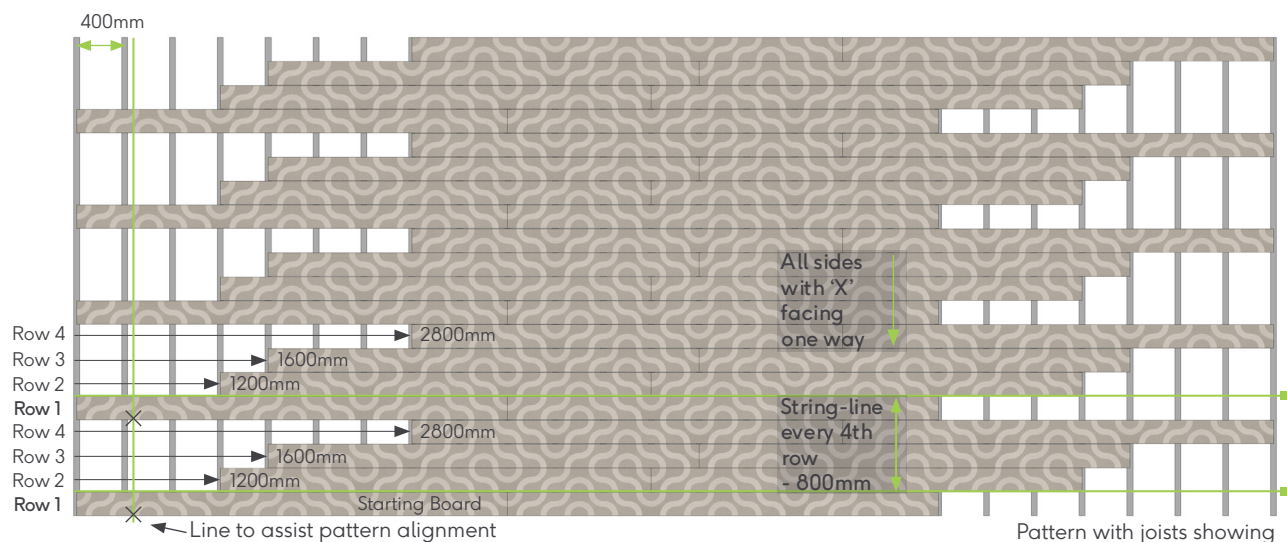
Pattern 11.15 is created by laying the deck boards with all the board sides marked with 'X' facing the same direction. Every 2nd-4th row is moved, as per the images below.



Overall pattern

Note:

To minimize deviations in pattern designs from off-cuts, use a thin kerf saw blade. To ensure a clean edge, trim the deck edge after install - take this into consideration before install.



Arrows (→) show where to start the board on the row for this pattern
 Crosses (X) show where the pattern lines through on the boards
 Pattern repeats from the starting board again on **Row 1**

Note: All sections of boards should be supported by at least three joists, if the board section is only going to be supported by two joists, move the board by 1200mm to retain the same pattern. The same applies if two rows of boards will be joining on the same joist. This is the reason none of the designs show boards moving by only 400mm, on these designs we have already shown the additional 1200mm movement.

Pattern 11.17

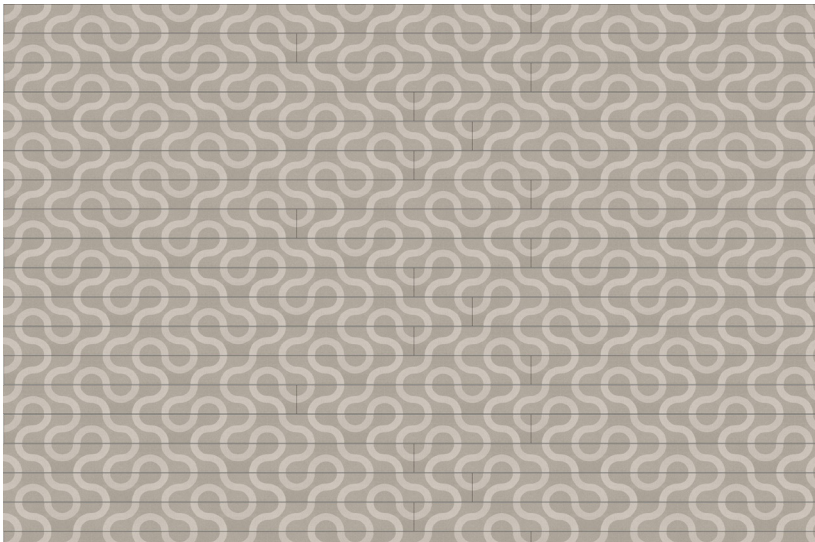
Use: Residential

Joist Centres: 400mm.

Deck board side spacing: 4mm. Butt Joint spacing: 1mm

(Note: this joint may open slightly with temperature fluctuations)

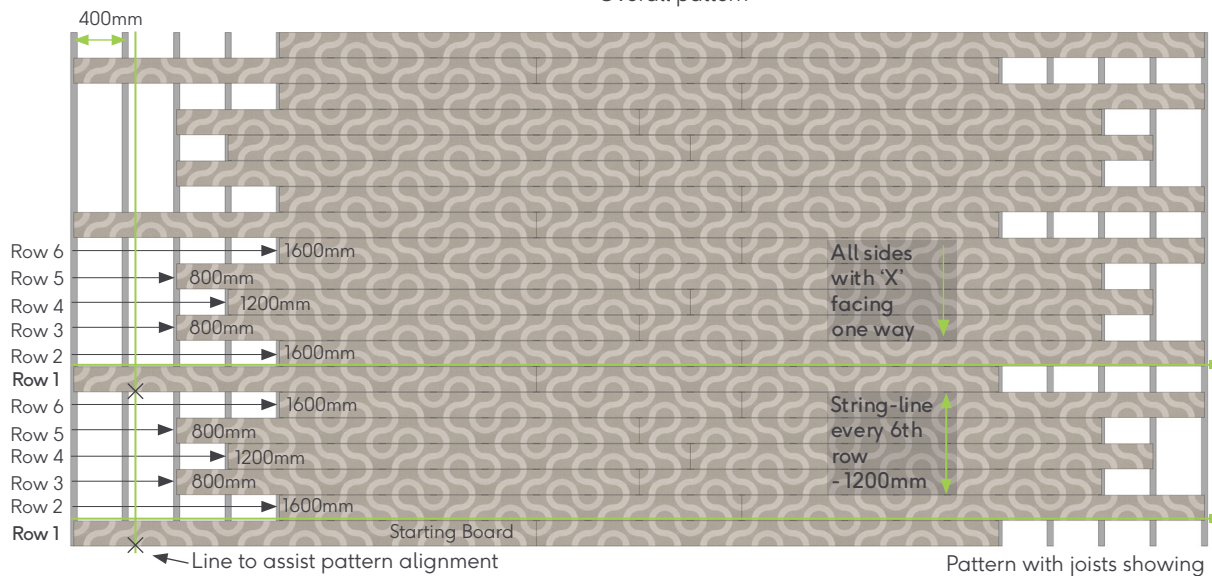
Pattern 11.17 is created by laying the deck boards with all the board sides marked with 'X' facing the same direction. Every 2nd-6th row is moved, as per the images below.



Overall pattern

Note:

To minimize deviations in pattern designs from off-cuts, use a thin kerf saw blade. To ensure a clean edge, trim the deck edge after install - take this into consideration before install.



Arrows (→) show where to start the board on the row for this pattern

Crosses (X) show where the pattern lines through on the boards

Pattern repeats from the starting board again on **Row 1**

Note: All sections of boards should be supported by at least three joists, if the board section is only going to be supported by two joists, move the board by 1200mm to retain the same pattern. The same applies if two rows of boards will be joining on the same joist. This is the reason none of the designs show boards moving by only 400mm, on these designs we have already shown the additional 1200mm movement.

Pattern 11.2

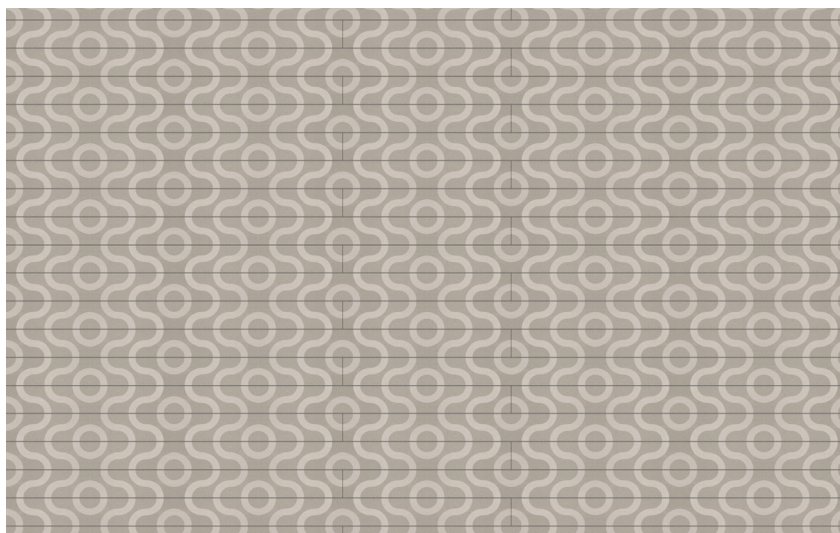
Use: Commercial or residential

Joist centres: 300mm or 400mm

Deck board side spacing: 4mm. Butt Joint spacing: 1mm

(Note: this joint may open slightly with temperature fluctuations)

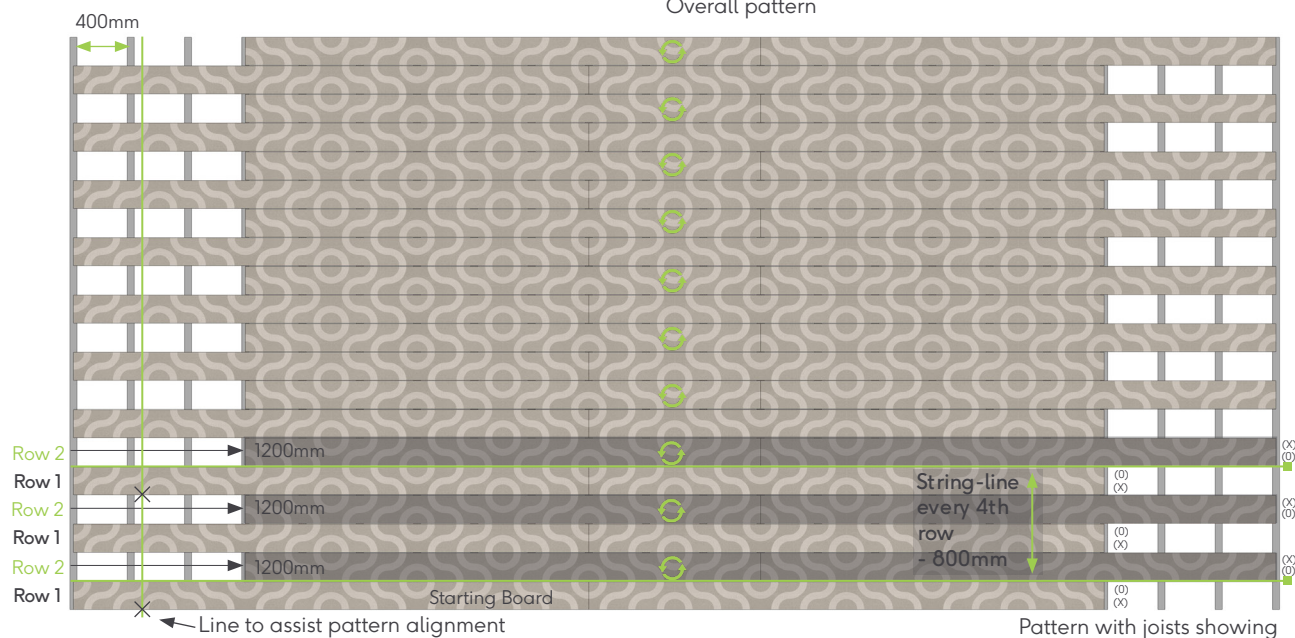
Pattern 11.2 is created by rotating every alternate deck board, with the board sides marked with 'X' facing each other. Every alternate row is moved, as per the images below.



Overall pattern

Note:

To minimize deviations in pattern designs from off-cuts, use a thin kerf saw blade. To ensure a clean edge, trim the deck edge after install - take this into consideration before install.



Arrows (→) show where to start the board on the row for this pattern
 Circles (↻) show when the board is rotated 180° from the starting board
 Crosses (X) show where the pattern lines through on the boards
 Pattern repeats from the starting board again on **Row 1**

Note: All sections of boards should be supported by at least three joists, if the board section is only going to be supported by two joists, move the board by 1200mm to retain the same pattern. The same applies if two rows of boards will be joining on the same joist. This is the reason none of the designs show boards moving by only 400mm, on these designs we have already shown the additional 1200mm movement.

Pattern 11.21

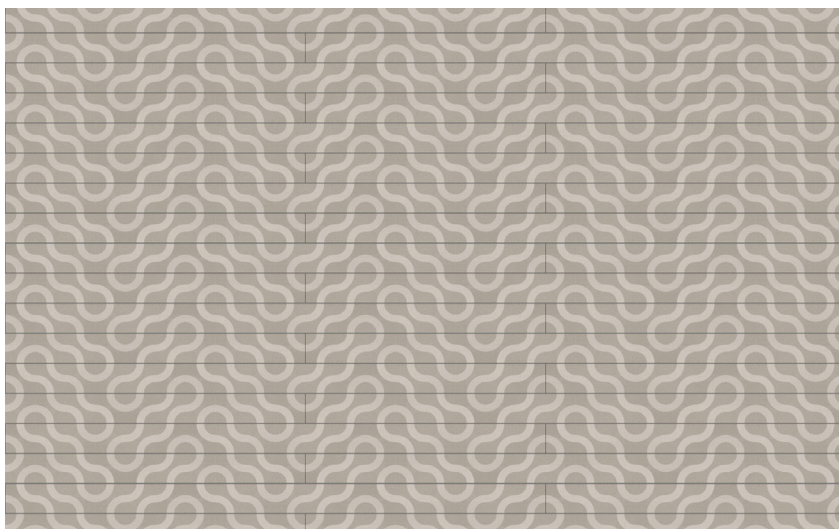
Use: Residential

Joist centres: 400mm

Deck board side spacing: 4mm. Butt Joint spacing: 1mm

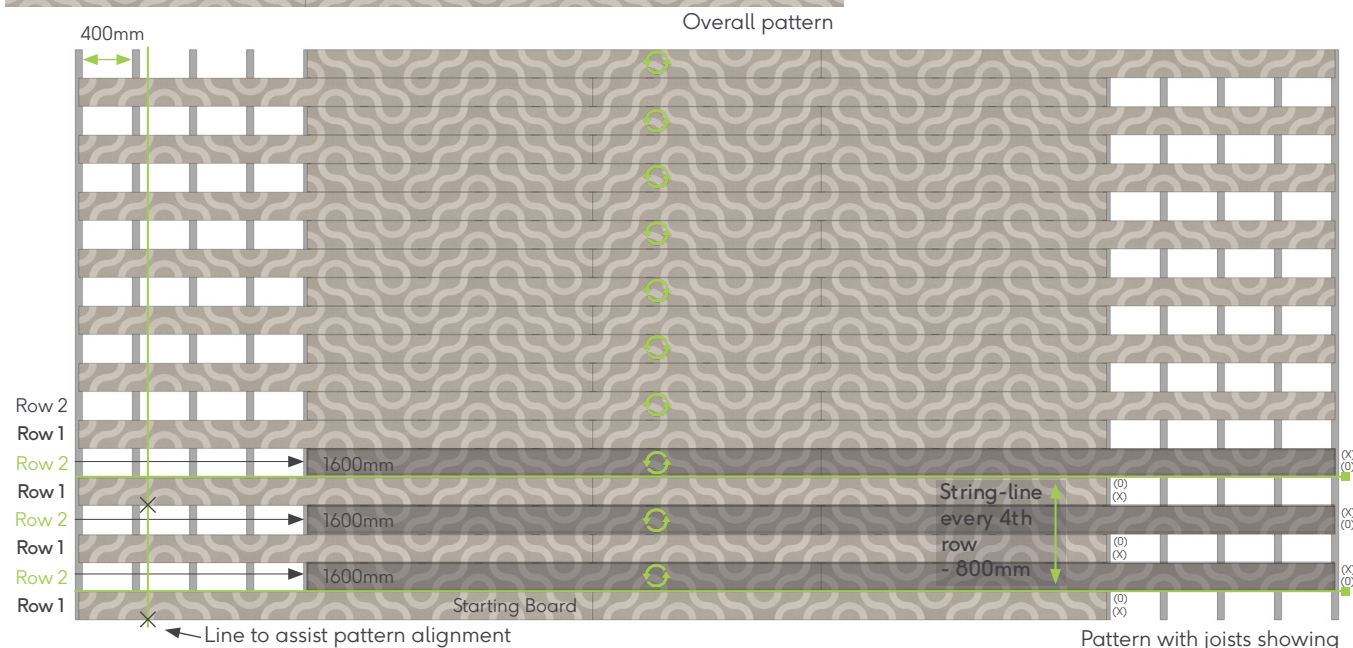
(Note: this joint may open slightly with temperature fluctuations)

Pattern 11.21 is created by rotating every alternate deck board, with the board sides marked with 'X' facing each other. Every alternate row is moved, as per the images below.



Note:

To minimize deviations in pattern designs from off-cuts, use a thin kerf saw blade. To ensure a clean edge, trim the deck edge after install - take this into consideration before install.



Arrows (→) show where to start the board on the row for this pattern

Circles (↻) show when the board is rotated 180° from the starting board

Crosses (X) show where the pattern lines through on the boards

Pattern repeats from the starting board again on Row 1

Note: All sections of boards should be supported by at least three joists, if the board section is only going to be supported by two joists, move the board by 1200mm to retain the same pattern. The same applies if two rows of boards will be joining on the same joist. This is the reason none of the designs show boards moving by only 400mm, on these designs we have already shown the additional 1200mm movement.

Pattern 11.22

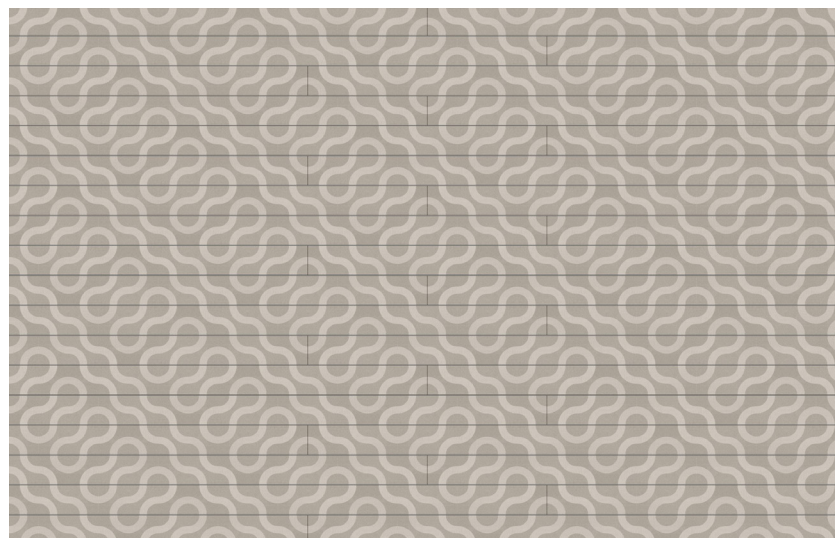
Use: Residential

Joist centres: 400mm

Deck board side spacing: 4mm. Butt Joint spacing: 1mm

(Note: this joint may open slightly with temperature fluctuations)

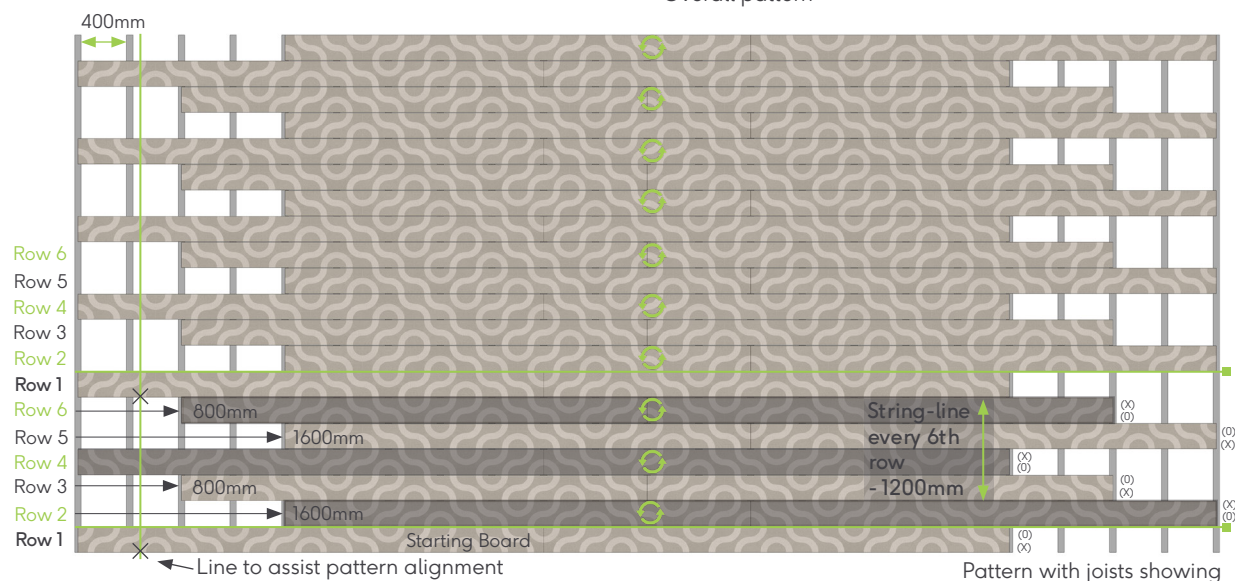
Pattern 11.22 is created by rotating every alternate deck board, with the board sides marked with 'X' facing each other. Every 2nd-3rd row is moved, as per the images below.



Overall pattern

Note:

To minimize deviations in pattern designs from off-cuts, use a thin kerf saw blade. To ensure a clean edge, trim the deck edge after install - take this into consideration before install.



Arrows (→) show where to start the board on the row for this pattern

Circles (↻) show when the board is rotated 180° from the starting board

Crosses (X) show where the pattern lines through on the boards

Pattern repeats from the starting board again on Row 1

Note: All sections of boards should be supported by at least three joists, if the board section is only going to be supported by two joists, move the board by 1200mm to retain the same pattern. The same applies if two rows of boards will be joining on the same joist. This is the reason none of the designs show boards moving by only 400mm, on these designs we have already shown the additional 1200mm movement.

Pattern 11.23

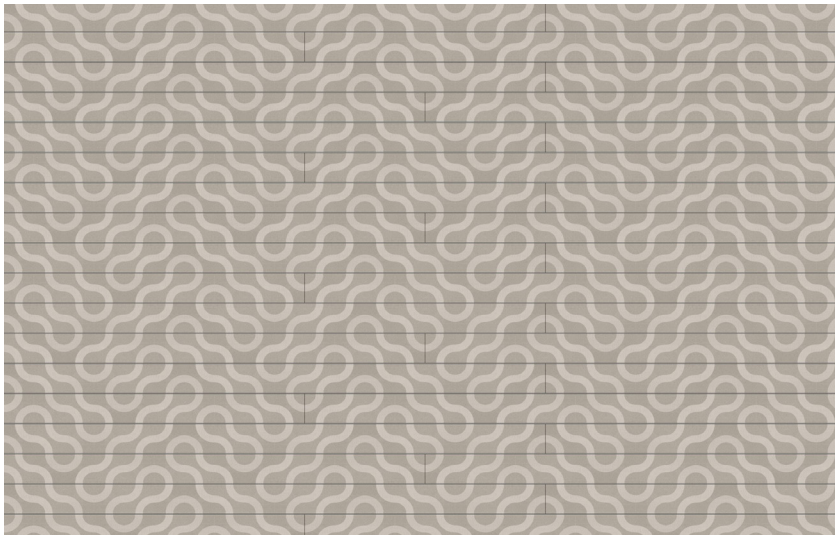
Use: Residential

Joist centers: 400mm

Deck board side spacing: 4mm. Butt Joint spacing: 1mm

(Note: this joint may open slightly with temperature fluctuations)

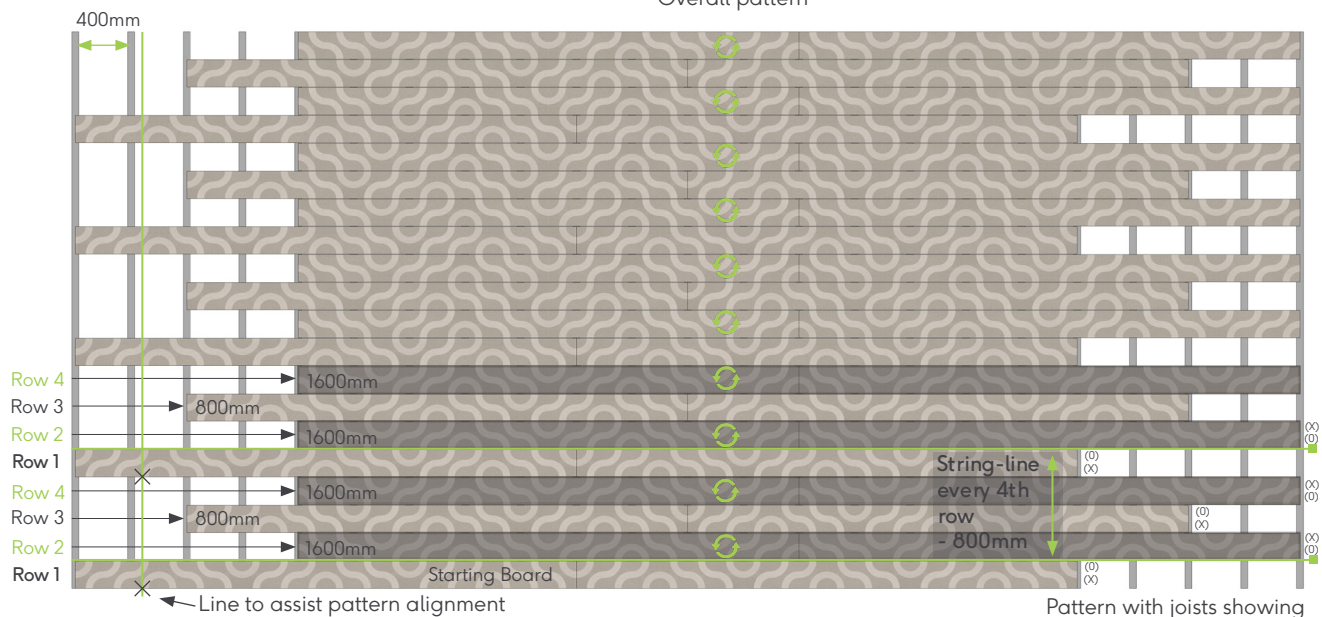
Pattern 11.23 is created by rotating every alternate deck board, with the board sides marked with 'X' facing each other. Every 2nd-4th row is moved, as per the images below.



Overall pattern

Note:

To minimize deviations in pattern designs from off-cuts, use a thin kerf saw blade. To ensure a clean edge, trim the deck edge after install - take this into consideration before install.



Arrows (→) show where to start the board on the row for this pattern
 Circles (↻) show when the board is rotated 180° from the starting board
 Crosses (X) show where the pattern lines through on the boards
 Pattern repeats from the starting board again on **Row 1**

Note: All sections of boards should be supported by at least three joists, if the board section is only going to be supported by two joists, move the board by 1200mm to retain the same pattern. The same applies if two rows of boards will be joining on the same joist. This is the reason none of the designs show boards moving by only 400mm, on these designs we have already shown the additional 1200mm movement.

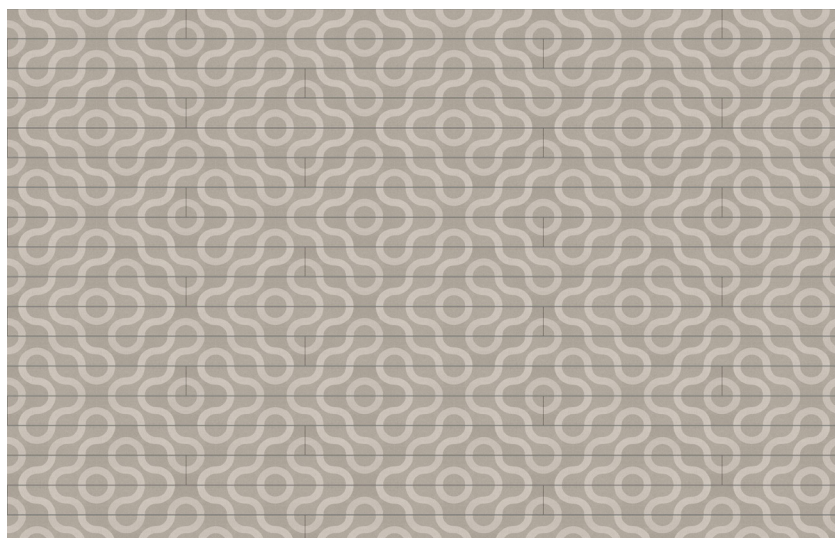
Pattern 11.26

Use: Residential

Joist centres: 400mm

Deck board side spacing: 4mm. Butt Joint spacing: 1mm (Note: this joint may open slightly with temperature fluctuations)

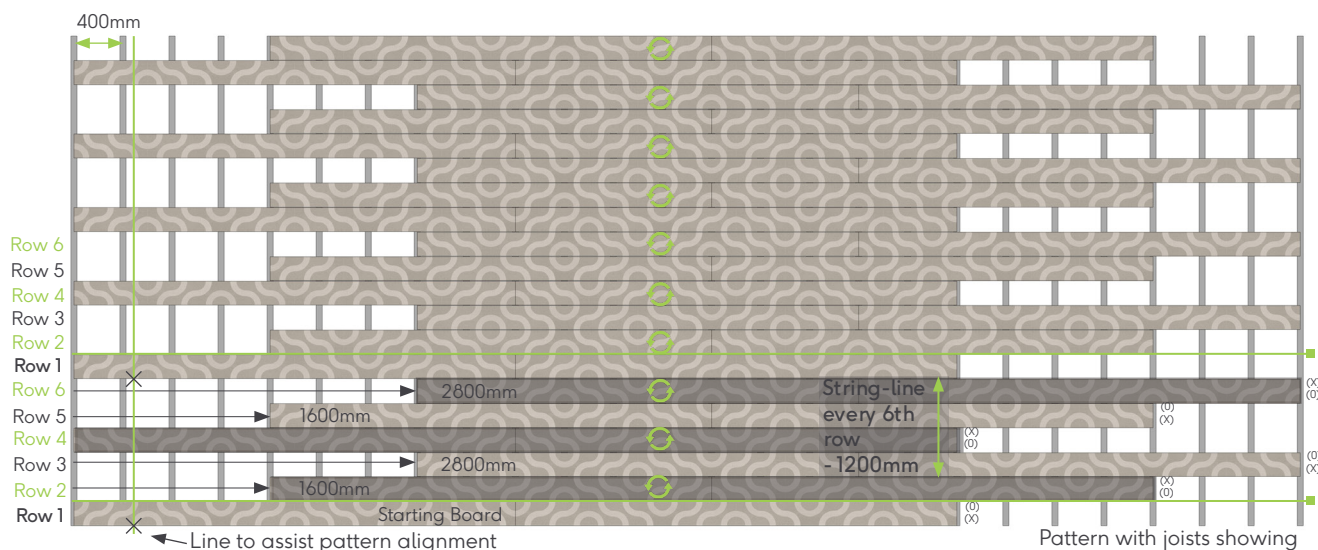
Pattern 11.26 is created by rotating every alternate deck board, with the board sides marked with 'X' facing each other. Every 2nd-3rd row is moved, as per the images below.



Overall pattern

Note:

To minimize deviations in pattern designs from off-cuts, use a thin kerf saw blade. To ensure a clean edge, trim the deck edge after install - take this into consideration before install.



Arrows (→) show where to start the board on the row for this pattern
 Circles (⊙) show when the board is rotated 180° from the starting board
 Crosses (X) show where the pattern lines through on the boards
 Pattern repeats from the starting board again on Row 1

Note: All sections of boards should be supported by at least three joists, if the board section is only going to be supported by two joists, move the board by 1200mm to retain the same pattern. The same applies if two rows of boards will be joining on the same joist. This is the reason none of the designs show boards moving by only 400mm, on these designs we have already shown the additional 1200mm movement.

Pattern 11.3

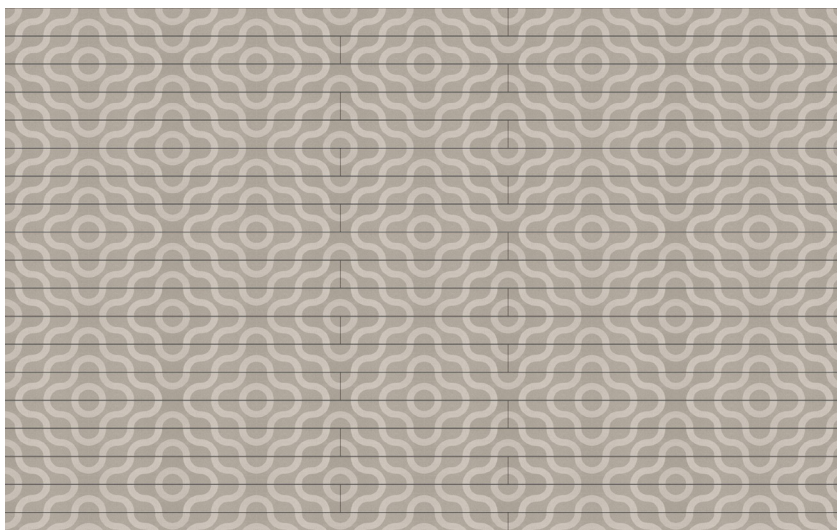
Use: Residential & Commercial

Joist centres: 300mm & 400mm

Deck board side spacing: 4mm. Butt Joint spacing: 1mm

(Note: Butt joints may open slightly with temperature fluctuations)

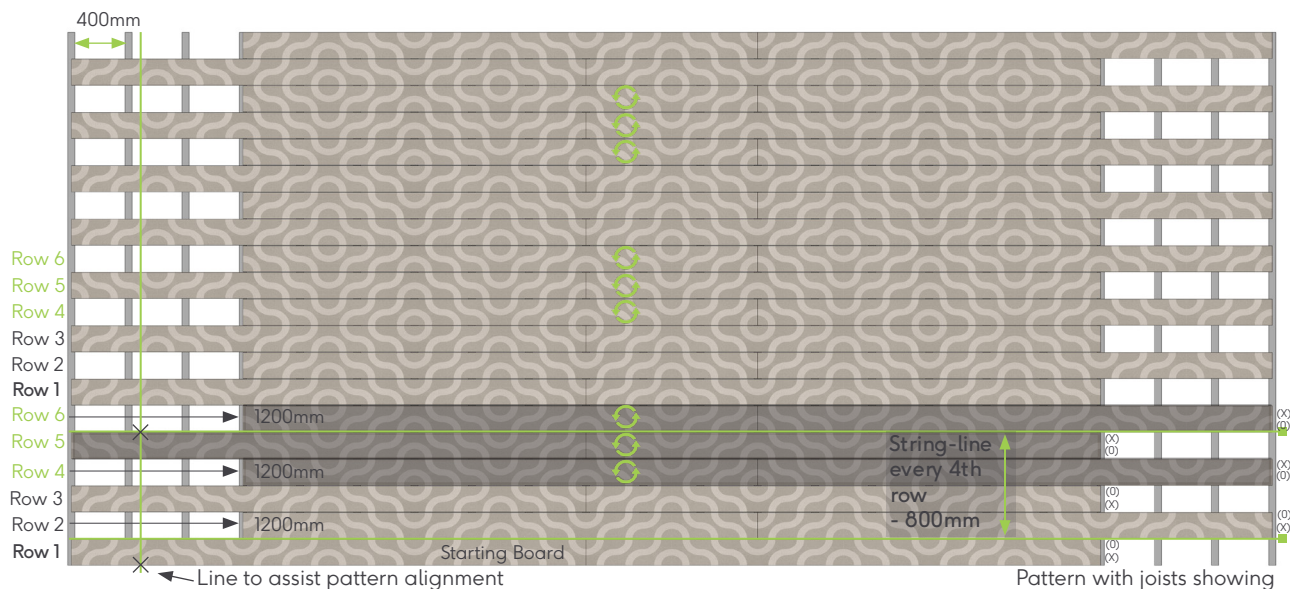
Pattern 11.3 is created by rotating every 3 deck boards, the board sides marked with 'X' will change direction every 3 boards. Every 2nd row is moved, as per the images below.



Overall pattern

Note:

To minimize deviations in pattern designs from off-cuts, use a thin kerf saw blade. To ensure a clean edge, trim the deck edge after install - take this into consideration before install.



Arrows (→) show where to start the board on the row for this pattern
 Circles (⊗) show when the board is rotated 180° from the starting board
 Crosses (X) show where the pattern lines through on the boards
 Pattern repeats from the starting board again on Row 1

Note: All sections of boards should be supported by at least three joists, if the board section is only going to be supported by two joists, move the board by 1200mm to retain the same pattern. The same applies if two rows of boards will be joining on the same joist. This is the reason none of the designs show boards moving by only 400mm, on these designs we have already shown the additional 1200mm movement.

Pattern 11.32

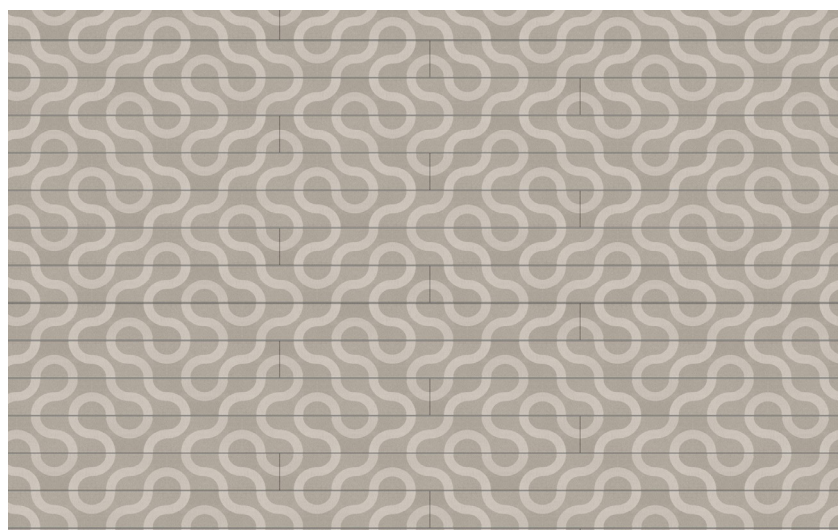
Use: Residential

Joist centres: 400mm

Deck board side spacing: 4mm. Butt Joint spacing: 1mm

(Note: Butt joints may open slightly with temperature fluctuations)

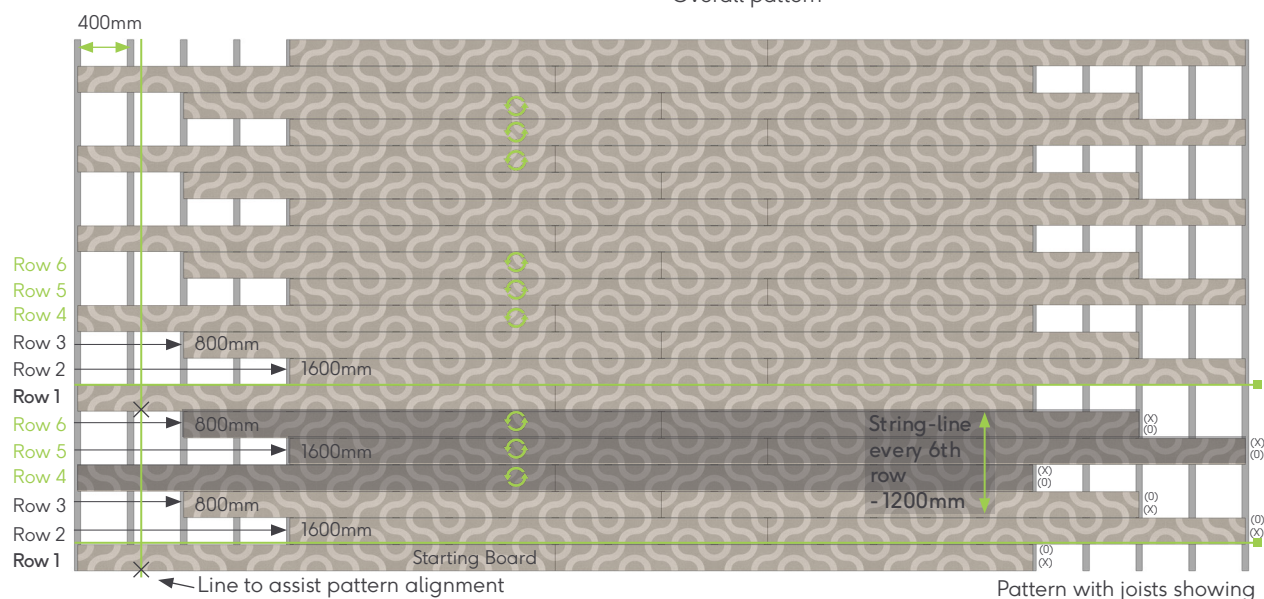
Pattern 11.32 is created by rotating every 3 deck boards, the board sides marked with 'X' will change direction every 3 boards. Every 2nd-3rd row is moved, as per the images below.



Overall pattern

Note:

To minimize deviations in pattern designs from off-cuts, use a thin kerf saw blade. To ensure a clean edge, trim the deck edge after install - take this into consideration before install.



Arrows (→) show where to start the board on the row for this pattern
 Circles (↻) show when the board is rotated 180° from the starting board
 Crosses (X) show where the pattern lines through on the boards
 Pattern repeats from the starting board again on **Row 1**

Note: All sections of boards should be supported by at least three joists, if the board section is only going to be supported by two joists, move the board by 1200mm to retain the same pattern. The same applies if two rows of boards will be joining on the same joist. This is the reason none of the designs show boards moving by only 400mm, on these designs we have already shown the additional 1200mm movement.

Pattern 11.37

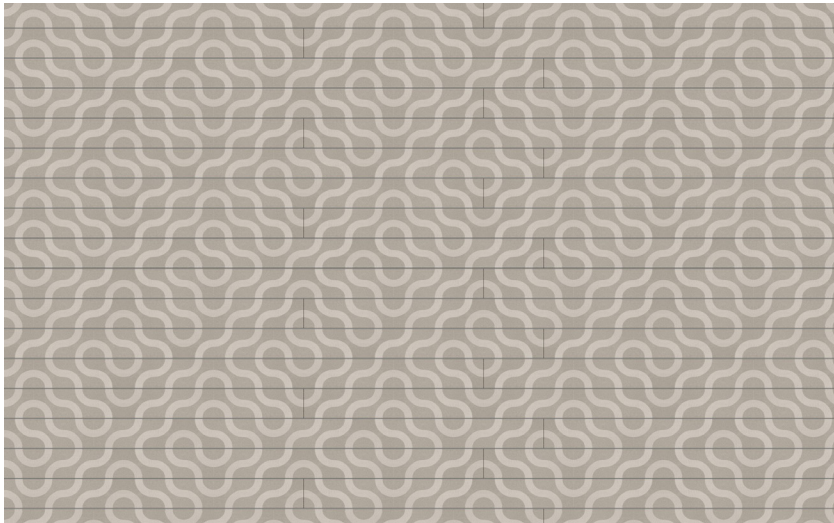
Use: Residential

Joist centres: 400mm

Deck board side spacing: 4mm. Butt Joint spacing: 1mm

(Note: Butt joints may open slightly with temperature fluctuations)

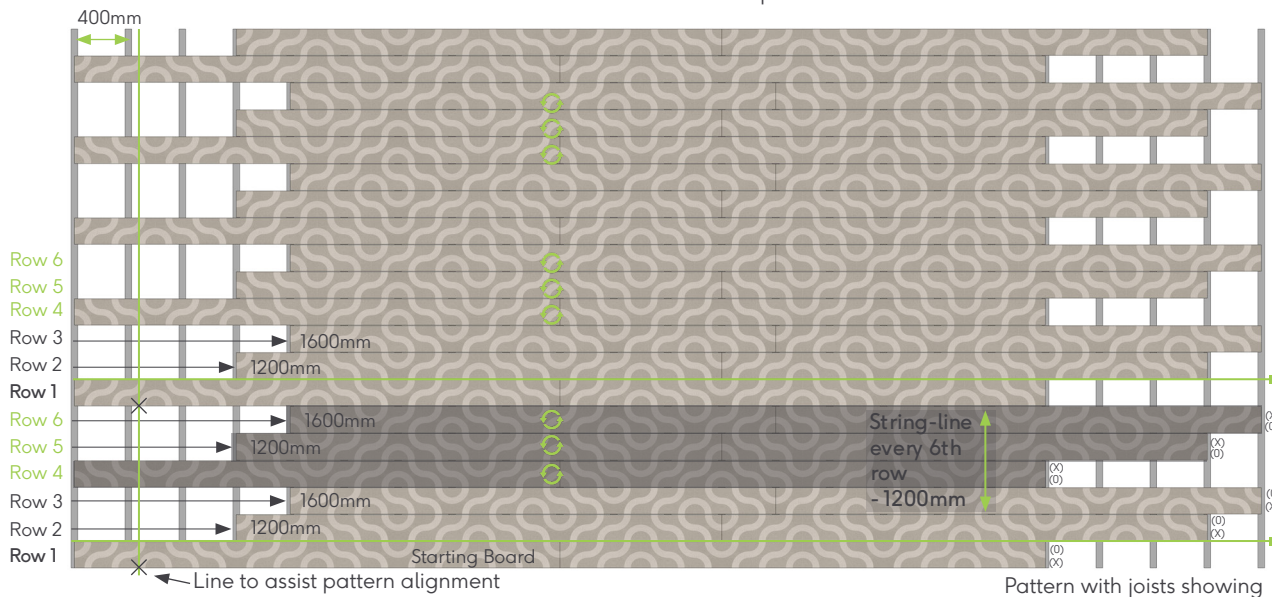
Pattern 11.37 is created by rotating every 3 deck boards, the board sides marked with 'X' will change direction every 3 boards. Every 2nd-3rd row is moved, as per the images below.



Overall pattern

Note:

To minimize deviations in pattern designs from off-cuts, use a thin kerf saw blade. To ensure a clean edge, trim the deck edge after install - take this into consideration before install.



Arrows (→) show where to start the board on the row for this pattern
 Circles (X) show when the board is rotated 180° from the starting board
 Crosses (X) show where the pattern lines through on the boards
 Pattern repeats from the starting board again on **Row 1**

Note: All sections of boards should be supported by at least three joists, if the board section is only going to be supported by two joists, move the board by 1200mm to retain the same pattern. The same applies if two rows of boards will be joining on the same joist. This is the reason none of the designs show boards moving by only 400mm, on these designs we have already shown the additional 1200mm movement.

Pattern 11.4

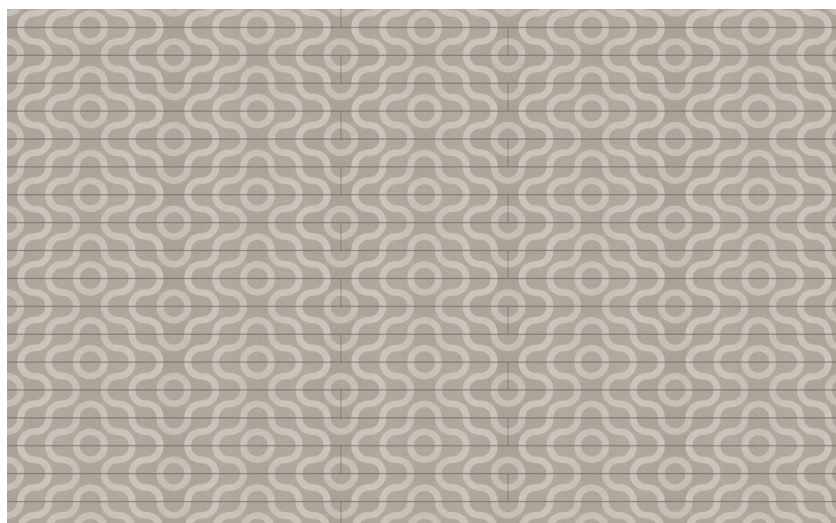
Use: Residential & Commercial

Joist centres: 300mm & 400mm.

Deck board side spacing: 4mm. Butt Joint spacing: 1mm

(Note: Butt joints may open slightly with temperature fluctuations)

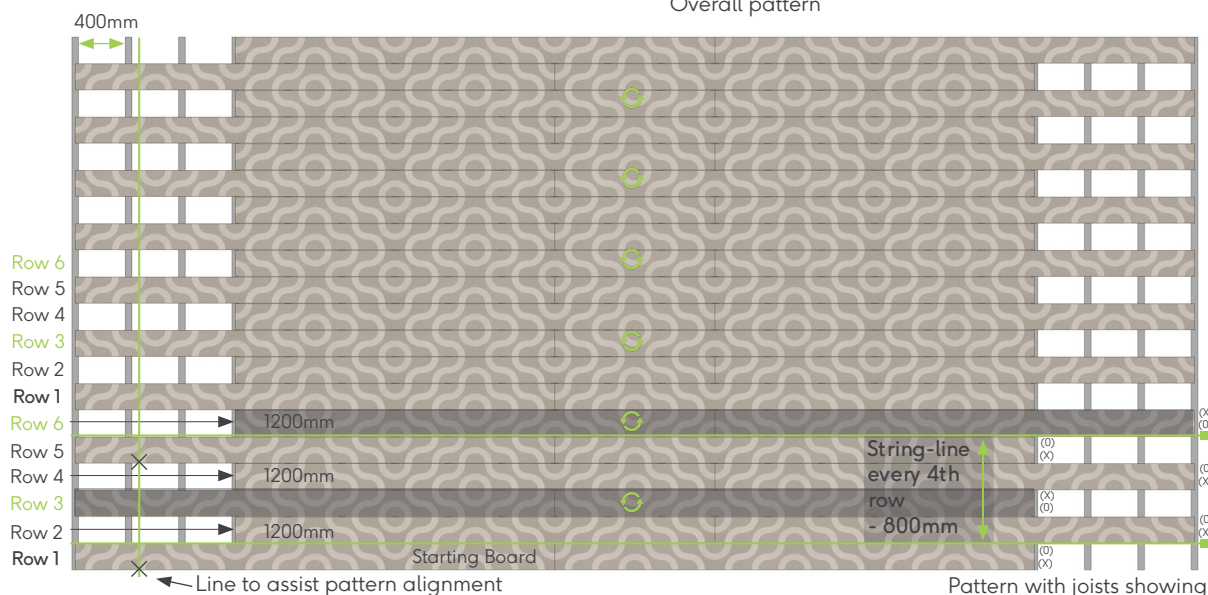
Pattern 11.4 is created by rotating every 3rd deck board, the board sides marked with 'X' will change direction every 3rd board. Every 2nd row is moved, as per the images below.



Overall pattern

Note:

To minimize deviations in pattern designs from off-cuts, use a thin kerf saw blade. To ensure a clean edge, trim the deck edge after install - take this into consideration before install.



Arrows (→) show where to start the board on the row for this pattern
 Circles (↻) show when the board is rotated 180° from the starting board
 Crosses (X) show where the pattern lines through on the boards
 Pattern repeats from the starting board again on **Row 1**

Note: All sections of boards should be supported by at least three joists, if the board section is only going to be supported by two joists, move the board by 1200mm to retain the same pattern. The same applies if two rows of boards will be joining on the same joist. This is the reason none of the designs show boards moving by only 400mm, on these designs we have already shown the additional 1200mm movement.

Pattern 11.43

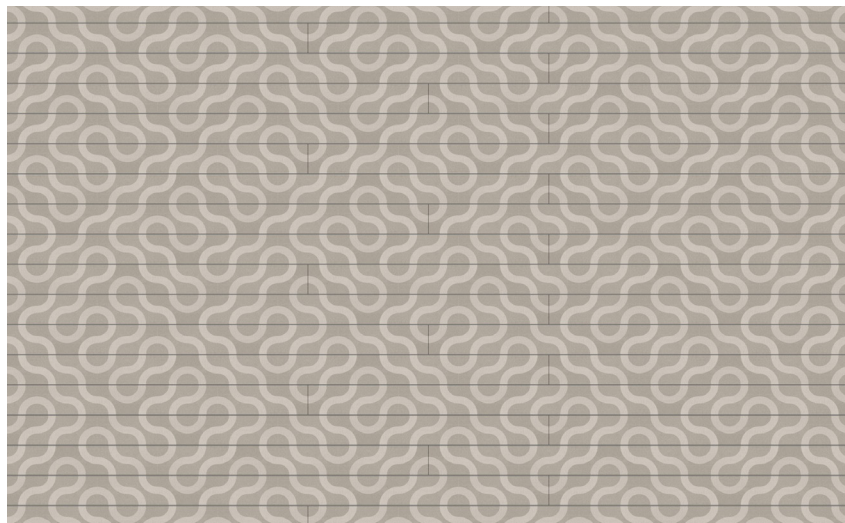
Usage: Residential

Joist centres: 400mm.

Deck board side spacing: 4mm. Butt Joint spacing: 1mm

(Note: Butt joints may open slightly with temperature fluctuations)

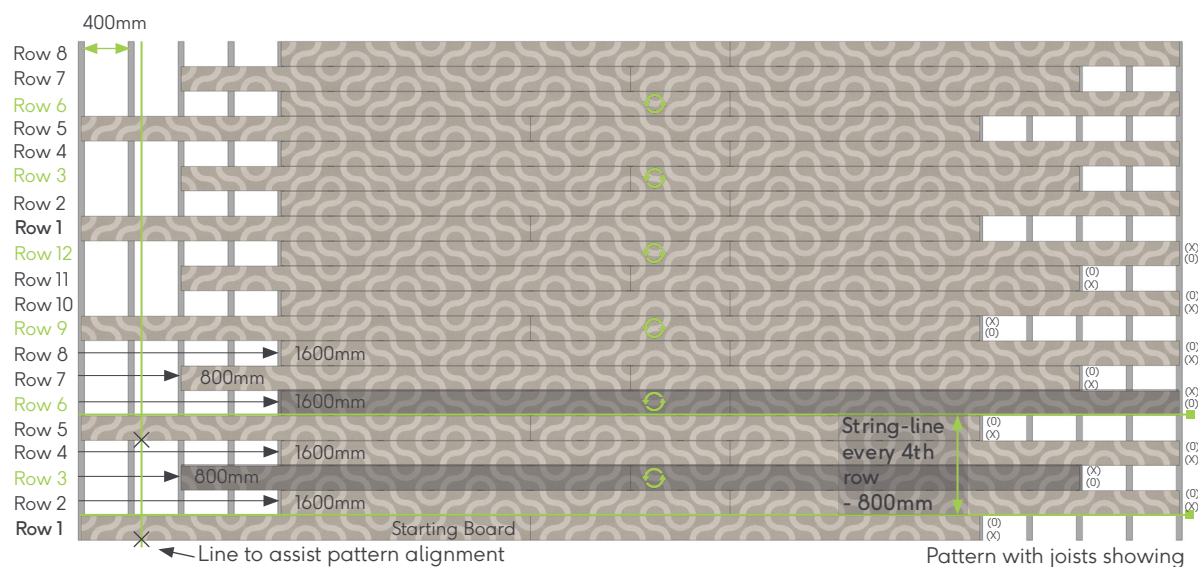
Pattern 11.43 is created by rotating every 3rd deck board, the board sides marked with 'X' will change direction every 3rd board. Every 2nd-4th row is moved, as per the images below.



Overall pattern

Note:

To minimize deviations in pattern designs from off-cuts, use a thin kerf saw blade. To ensure a clean edge, trim the deck edge after install - take this into consideration before install.



Arrows (→) show where to start the board on the row for this pattern
 Circles (↻) show when the board is rotated 180° from the starting board
 Crosses (X) show where the pattern lines through on the boards
 Pattern repeats from the starting board again on Row 1

Note: All sections of boards should be supported by at least three joists, if the board section is only going to be supported by two joists, move the board by 1200mm to retain the same pattern. The same applies if two rows of boards will be joining on the same joist. This is the reason none of the designs show boards moving by only 400mm, on these designs we have already shown the additional 1200mm movement.

Pattern 11.45

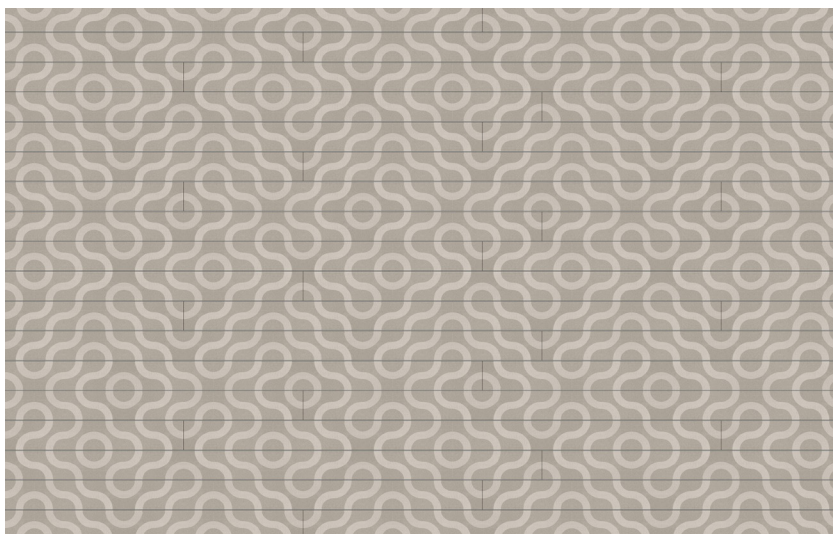
Use: Residential

Joist centres: 400mm.

Deck board side spacing: 4mm. Butt Joint spacing: 1mm

(Note: Butt joints may open slightly with temperature fluctuations)

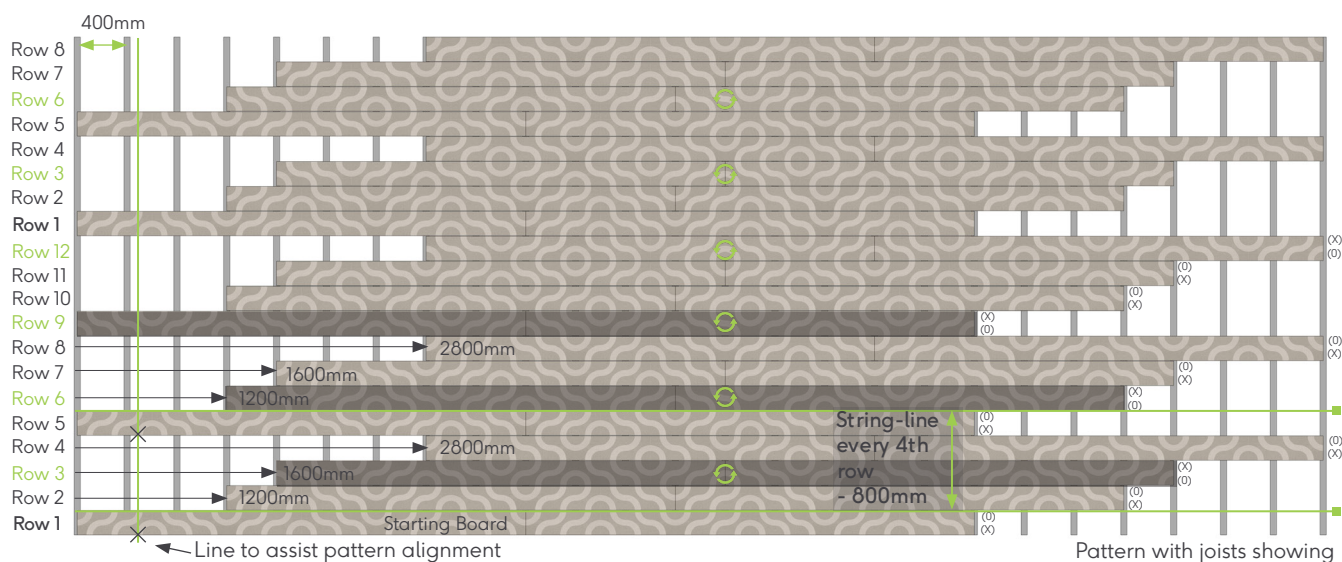
Pattern 11.45 is created by rotating every 3rd deck board, the board sides marked with 'X' will change direction every 3rd board. Every 2nd-4th row is moved, as per the images below.



Overall pattern

Note:

To minimize deviations in pattern designs from off-cuts, use a thin kerf saw blade. To ensure a clean edge, trim the deck edge after install - take this into consideration before install.



Pattern with joists showing

Arrows (→) show where to start the board on the row for this pattern
 Circles (↻) show when the board is rotated 180° from the starting board
 Crosses (X) show where the pattern lines through on the boards
 Pattern repeats from the starting board again on Row 1

Note: All sections of boards should be supported by at least three joists, if the board section is only going to be supported by two joists, move the board by 1200mm to retain the same pattern. The same applies if two rows of boards will be joining on the same joist. This is the reason none of the designs show boards moving by only 400mm, on these designs we have already shown the additional 1200mm movement.

Pattern 11.47

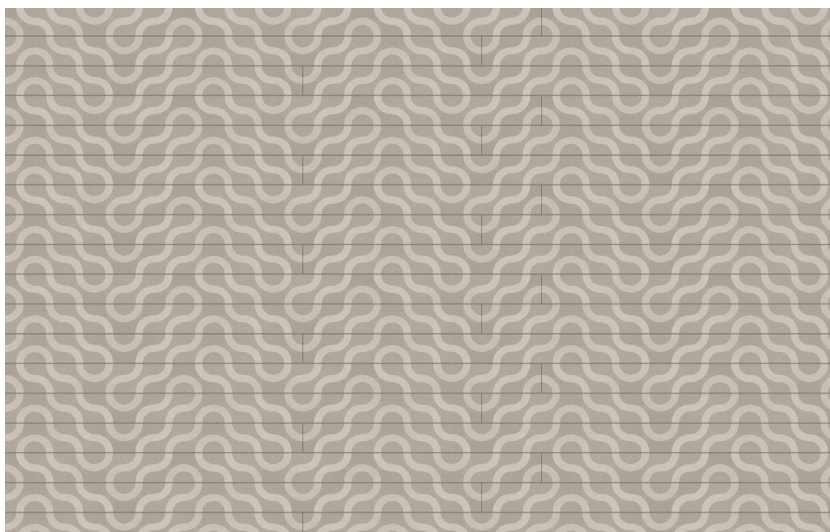
Use: Residential

Joist centres: 400mm.

Deck board side spacing: 4mm. Butt joint spacing: 1mm

(Note: Butt joints may open slightly with temperature fluctuations)

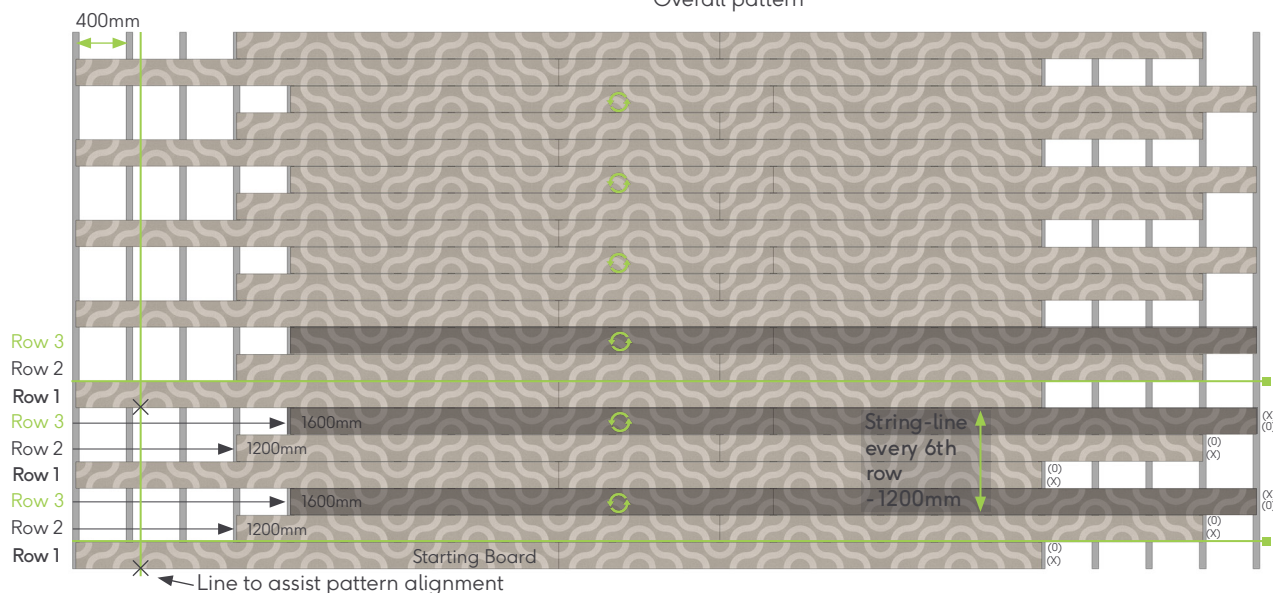
Pattern 11.47 is created by rotating every 3rd deck board, the board sides marked with 'X' will change direction every 3rd board. Every 2nd-3rd row is moved, as per the images below.



Overall pattern

Note:

To minimize deviations in pattern designs from off-cuts, use a thin kerf saw blade. To ensure a clean edge, trim the deck edge after install - take this into consideration before install.



Arrows (→) show where to start the board on the row for this pattern
 Circles (↻) show when the board is rotated 180° from the starting board
 Crosses (X) show where the pattern lines through on the boards
 Pattern repeats from the starting board again on Row 1

Note: All sections of boards should be supported by at least three joists, if the board section is only going to be supported by two joists, move the board by 1200mm to retain the same pattern. The same applies if two rows of boards will be joining on the same joist. This is the reason none of the designs show boards moving by only 400mm, on these designs we have already shown the additional 1200mm movement.

Pattern 11.5

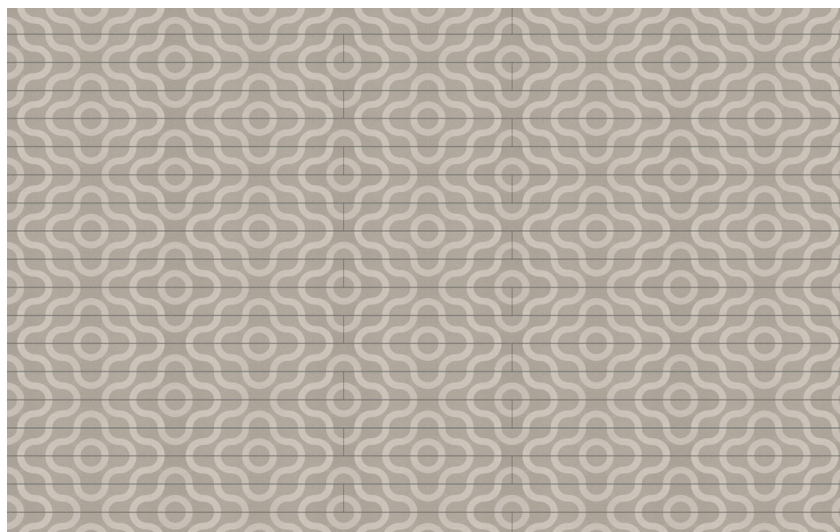
Use: Residential & Commercial

Joist centres: 300mm & 400mm.

Deck board side spacing: 4mm. **Butt Joint spacing:** 1mm

(Note: Butt joints may open slightly with temperature fluctuations)

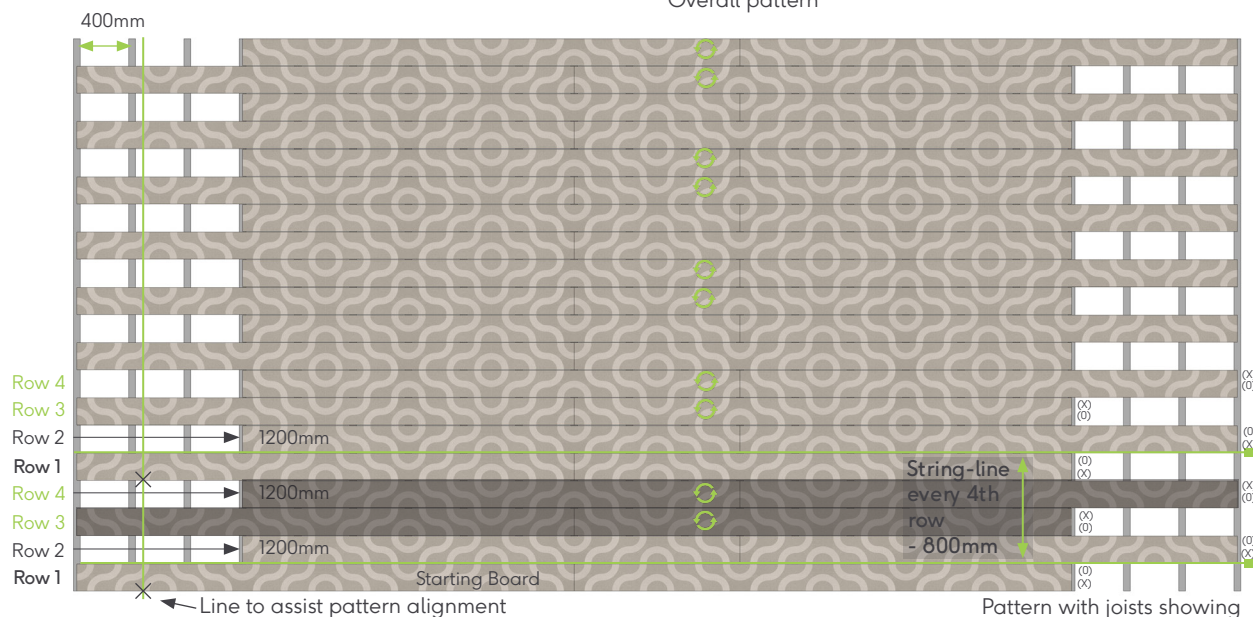
Pattern 11.5 is created by rotating every 2 deck boards, the board sides marked with 'X' will change direction every 2 boards. Every 2nd row is moved, as per the images below.



Overall pattern

Note:

To minimize deviations in pattern designs from off-cuts, use a thin kerf saw blade. To ensure a clean edge, trim the deck edge after install - take this into consideration before install.



Arrows (→) show where to start the board on the row for this pattern

Circles (↻) show when the board is rotated 180° from the starting board

Crosses (X) show where the pattern lines through on the boards

Pattern repeats from the starting board again on **Row 1**

Note: All sections of boards should be supported by at least three joists, if the board section is only going to be supported by two joists, move the board by 1200mm to retain the same pattern. The same applies if two rows of boards will be joining on the same joist. This is the reason none of the designs show boards moving by only 400mm, on these designs we have already shown the additional 1200mm movement.

Pattern 11.53

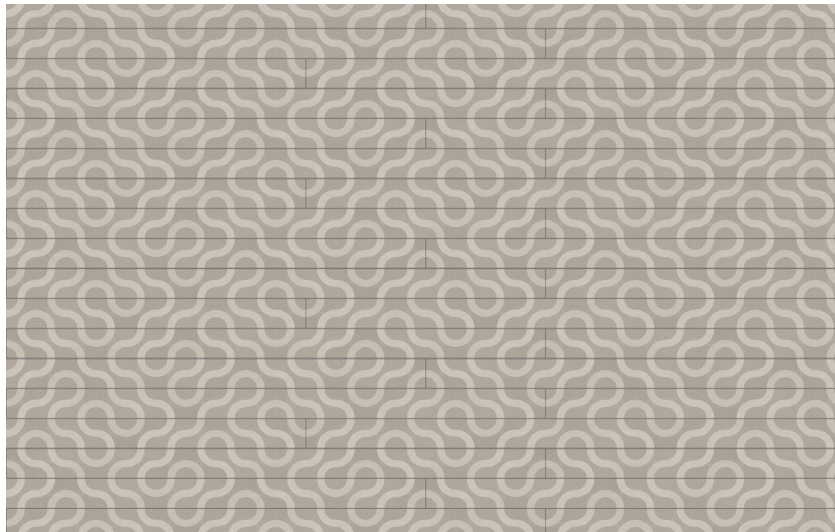
Use: Residential & Commercial

Joist centres: 300mm & 400mm.

Deck board side spacing: 4mm. Butt Joint spacing: 1mm

(Note: Butt joints may open slightly with temperature fluctuations)

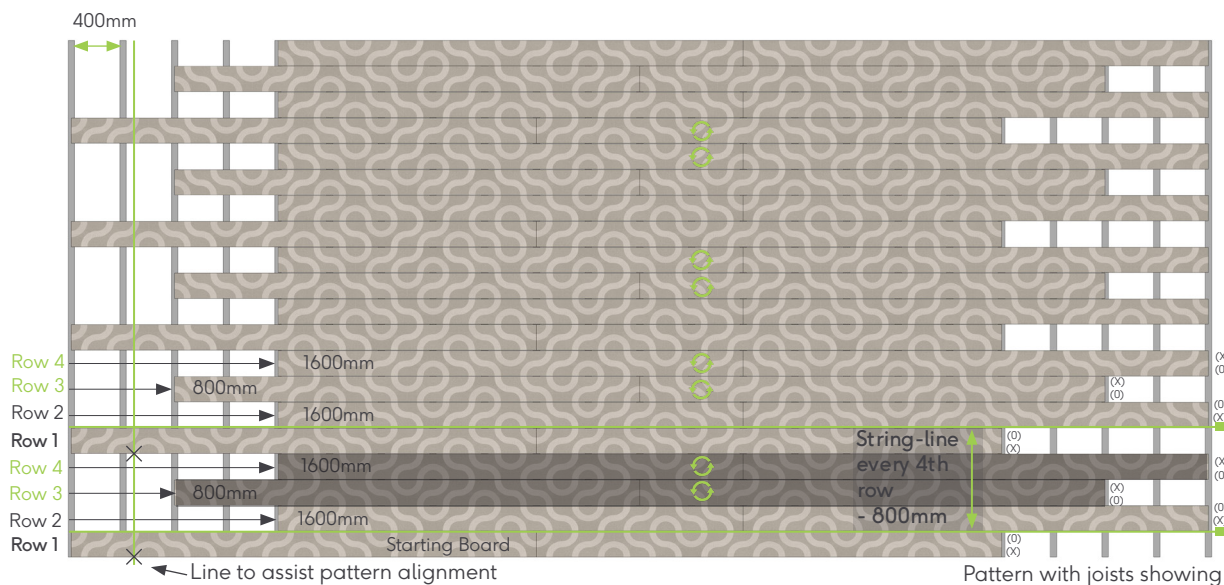
Pattern 11.53 is created by rotating every 2 deck boards, the board sides marked with 'X' will change direction every 2 boards. Every 2nd-4th row is moved, as per the images below.



Overall pattern

Note:

To minimize deviations in pattern designs from off-cuts, use a thin kerf saw blade. To ensure a clean edge, trim the deck edge after install - take this into consideration before install.



Arrows (→) show where to start the board on the row for this pattern
 Circles (↻) show when the board is rotated 180° from the starting board
 Crosses (X) show where the pattern lines through on the boards
 Pattern repeats from the starting board again on **Row 1**

Note: All sections of boards should be supported by at least three joists, if the board section is only going to be supported by two joists, move the board by 1200mm to retain the same pattern. The same applies if two rows of boards will be joining on the same joist. This is the reason none of the designs show boards moving by only 400mm, on these designs we have already shown the additional 1200mm movement.

Pattern 11.6

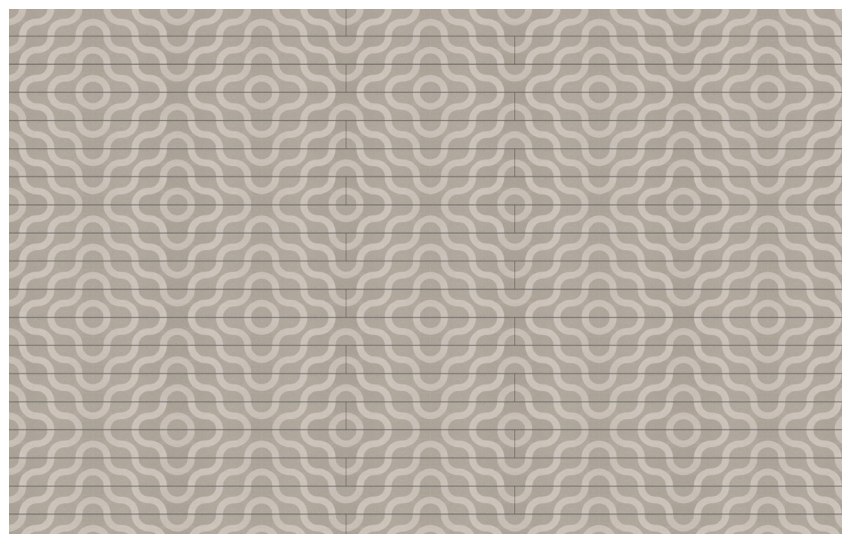
Use: Residential & Commercial

Joist centres: 300mm & 400mm.

Deck board side spacing: 4mm. Butt Joint spacing: 1mm

(Note: Butt joints may open slightly with temperature fluctuations)

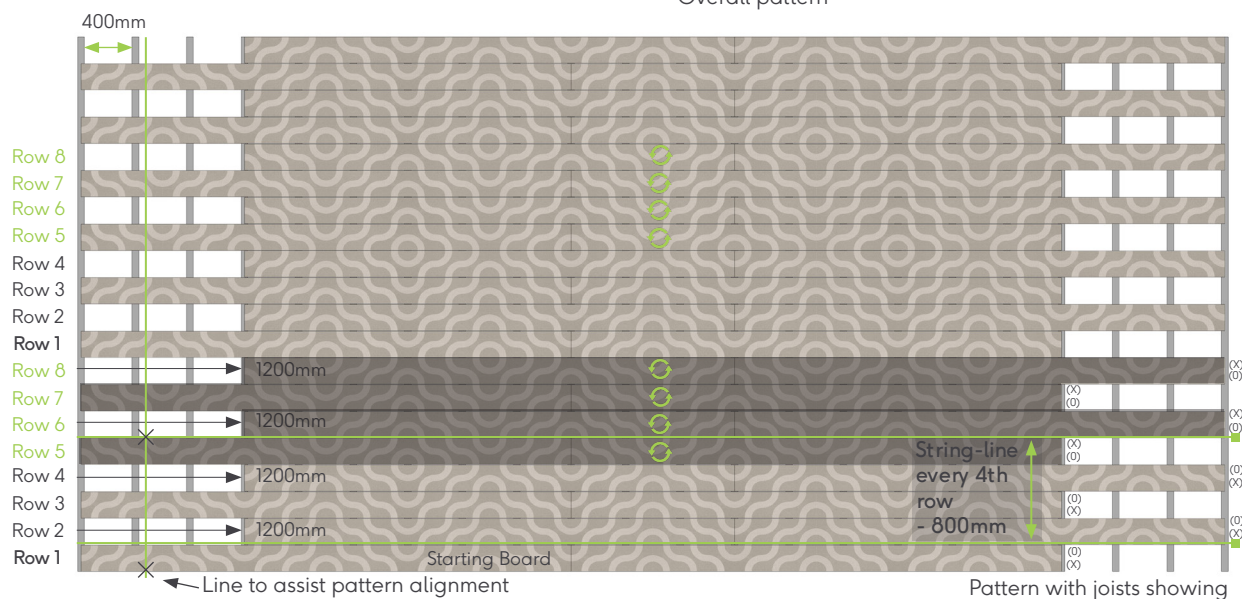
Pattern 11.6 is created by rotating every 4 deck boards, the board sides marked with 'X' will change direction every 4 boards. Every 2nd row is moved, as per the images below.



Overall pattern

Note:

To minimize deviations in pattern designs from off-cuts, use a thin kerf saw blade. To ensure a clean edge, trim the deck edge after install - take this into consideration before install.



Arrows (→) show where to start the board on the row for this pattern

Circles (↻) show when the board is rotated 180° from the starting board

Crosses (X) show where the pattern lines through on the boards

Pattern repeats from the starting board again on Row 1

Note: All sections of boards should be supported by at least three joists, if the board section is only going to be supported by two joists, move the board by 1200mm to retain the same pattern. The same applies if two rows of boards will be joining on the same joist. This is the reason none of the designs show boards moving by only 400mm, on these designs we have already shown the additional 1200mm movement.

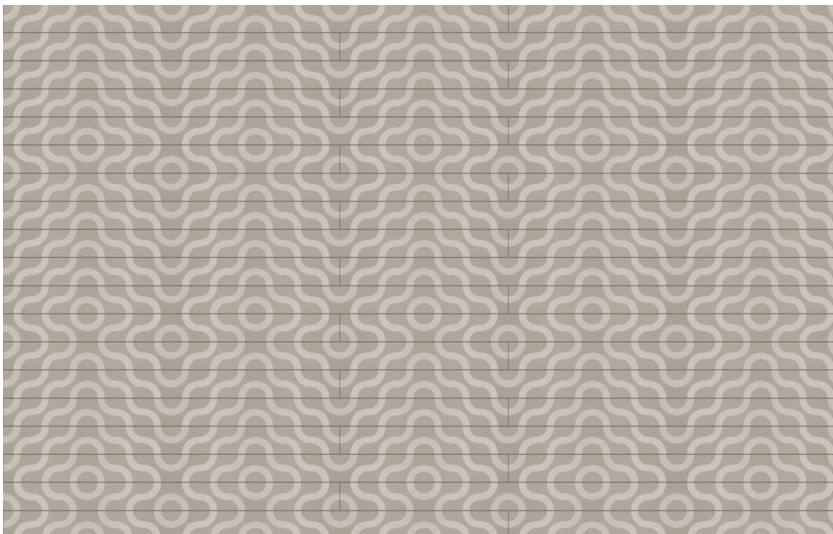
Pattern 11.7

Use: Residential & Commercial

Joist centres: 300mm & 400mm.

Deck board side spacing: 4mm. Butt joint spacing: 1mm (Note: Butt joints may open slightly with temperature fluctuations)

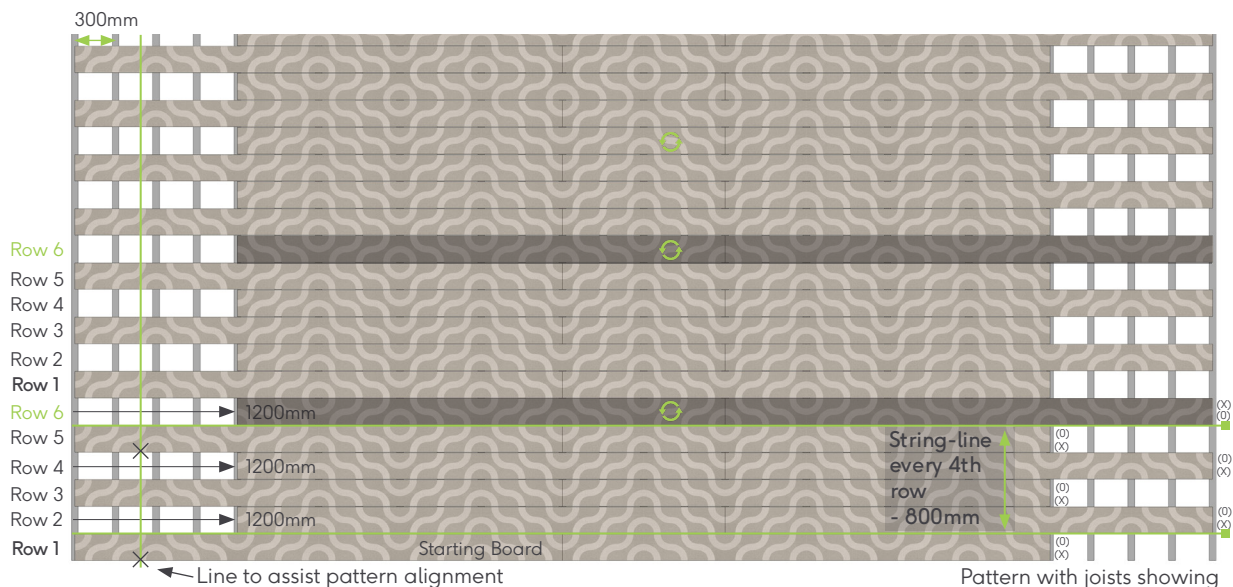
Pattern 11.7 is created by rotating every 6th deck board, the board sides marked with 'X' will change direction every 6th board. Every 2nd row is moved, as per the images below.



Overall pattern

Note:

To minimize deviations in pattern designs from off-cuts, use a thin kerf saw blade. To ensure a clean edge, trim the deck edge after install - take this into consideration before install.



Arrows (→) show where to start the board on the row for this pattern
 Circles (↻) show when the board is rotated 180° from the starting board
 Crosses (X) show where the pattern lines through on the boards
 Pattern repeats from the starting board again on **Row 1**

Note: All sections of boards should be supported by at least three joists, if the board section is only going to be supported by two joists, move the board by 1200mm to retain the same pattern. The same applies if two rows of boards will be joining on the same joist. This is the reason none of the designs show boards moving by only 400mm, on these designs we have already shown the additional 1200mm movement.

Pattern 11.72

Use: Residential & Commercial

Joist centres: 300mm.

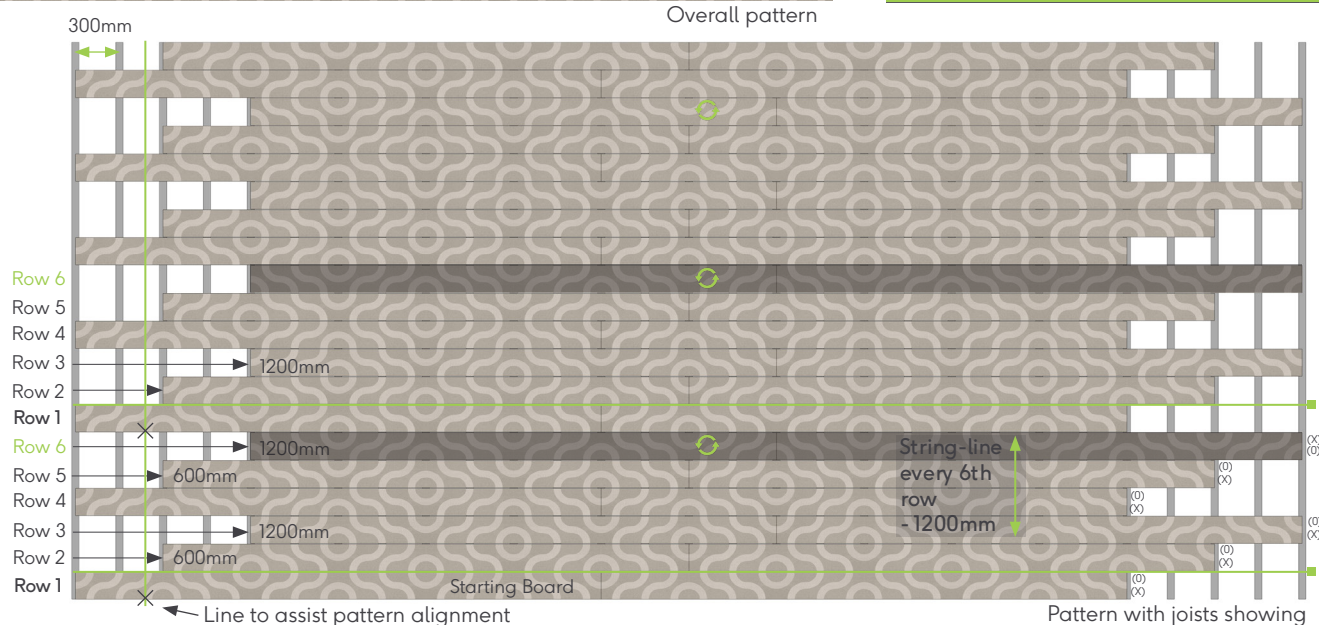
Deck board side spacing: 4mm. Butt Joint spacing: 1mm (Note: Butt joints may open slightly with temperature fluctuations)

Pattern 11.72 is created by rotating every 6th deck boards, the board sides marked with 'X' will change direction every 6th board. Every 2nd-4th row is moved, as per the images below.



Note:

To minimize deviations in pattern designs from off-cuts, use a thin kerf saw blade. To ensure a clean edge, trim the deck edge after install - take this into consideration before install.



Arrows (→) show where to start the board on the row for this pattern
 Circles (↻) show when the board is rotated 180° from the starting board
 Crosses (X) show where the pattern lines through on the boards
 Pattern repeats from the starting board again on **Row 1**

Note: All sections of boards should be supported by at least three joists, if the board section is only going to be supported by two joists, move the board by 1200mm to retain the same pattern. The same applies if two rows of boards will be joining on the same joist. This is the reason none of the designs show boards moving by only 400mm, on these designs we have already shown the additional 1200mm movement.

Taking care

We recommend cleaning your deck twice a year or as required, dependant on location and usage. This is to remove leaves and general dirt particles; areas under trees or by foliage will require more cleaning than open areas.

Generally, cleaning can be done with a common household detergent mixed with warm water, however a specified decking cleaner can be used - such as 'Jeyes Decking Power'



Wet the area with water 10-15 minutes before applying any cleaning solution. Test all cleaning methods or solutions in an inconspicuous area first before applying to a larger area of the deck



All cleaning solutions should be used in accordance with the instructions and safety information provided by the manufacturer. Test all cleaning methods and solutions in an inconspicuous area first before applying to a larger area of the deck



Use a stiff brush to thoroughly scrub the surface of the boards. The most effective type of brush has natural bristles that are around 30mm-50mm in length, which can get into the depth of the grain and dislodge dirt particles



Pressure washers can be used carefully on Millboard decking for cleaning and rinsing. We would recommend following the below guidelines:

- A PSI no greater than 2,000 should be used, with a 40 to 60 degree spread fan tip
- The head should always be kept around 300mm away from the surface
- Please note that using pressure washers may increase the chance of screw holes becoming more visible
- Direct, prolonged, and intense contact could damage the surface of the boards

If the board surface becomes dirty during installation, this should be cleaned as soon as possible using warm soapy water (dishwashing liquid) and a brush.

Cover the boards from any surrounding building works especially if there are silicone renders being applied. If possible try to complete all rendering at least 2 weeks before decking installation as migration off the walls from rain can still wash down dust onto the deck and stick to the surface release agent on the new boards. Overspray from painting can also mark the surface of the boards. Stubborn marks may be removed with a range of different cleaners depending on the mark. Please contact us for more information on [02476 439 943](tel:02476439943).



Live. Life. Outside.



The Millboard Company Ltd
UK Head Office
1 Argosy Court,
Scimitar Way,
Coventry
CV3 4GA

T: +44 (0) 24 7643 9943
E: enquiries@millboard.co.uk

millboard.com



Company registered No. 06061318
VAT No: 980 616602

© 2025 The Millboard Company Ltd., Millboard®, Lastane®, Durafix®, Lasta-Grip®, DuoSpan®, DuoLift®, Envello® and the phrase "Live. Life. Outside.™" are protected trademarks. Patents and Patents Pending apply to Millboard® products. The company will vigorously defend its patent rights. Due to printing restraints, actual colours may vary from those shown in brochure. This brochure is not to be reproduced or copied without written permission from Millboard directors. Millboard has a policy of continual improvement to specification. Product blend, colours and sizes may change without notice. All sizes and measurements are nominal. Information is correct at time of going to press. Patent numbers include GB 2445714, GB 2449184, USA 8,065,849, CAN 2664329, EU 1951971.

2025v1